

COMSPHERE[®] 3821PLUS

SOFTWARE-DEFINED (SD) 33.6 Kbps V.34 MODEM CARD

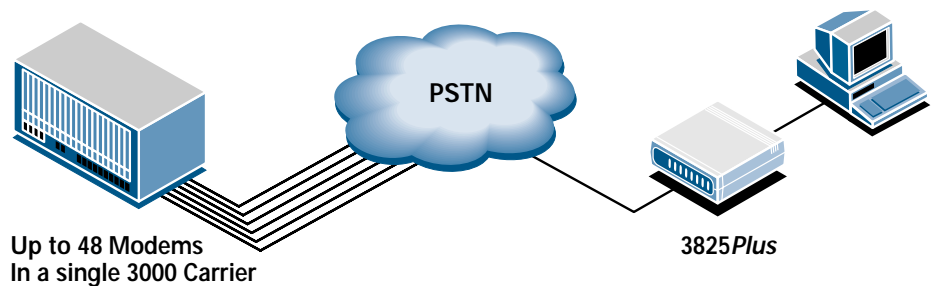


B E N E F I T S

- **SAVES TIME AND MONEY.** MAXIMIZES ALL CENTRAL SITE CONNECTIONS WITH V.34 SPEEDS UP TO 33.6 Kbps
- **SAVES SPACE, TRIPLES CARRIER PRODUCTIVITY.** CONTAINS THREE V.34 MODEMS, ALLOWING FOR UP TO 48 UNITS IN A SINGLE 3000 CARRIER
- **ENSURES DATA CLARITY IN WIRE AND WIRELESS APPLICATIONS.** SUPPORTS ENHANCED THROUGHPUT CELLULAR (ETC[®])
- **ECONOMICALLY EXTENDS FUNCTIONALITY.** ACCEPTS UPGRADES AND ENHANCEMENTS VIA SIMPLE SOFTWARE DOWNLOADS
- **SIMPLIFIES CONTROL.** QUICKLY CONFIGURE OR CLONE COMSPHERE MODEMS REMOTELY FROM A CENTRAL LOCATION
- **NETWORK MANAGED.** MANAGE, TEST, TROUBLESHOOT, AND GATHER INFORMATION FROM REMOTE COMSPHERE MODEMS WITH THE COMSPHERE 6700 NMS
- **SECURES DATA.** ORIGINATE, ANSWER, AND CALL-BACK SECURITY FEATURES ARE BUILT IN
- **UNSURPASSED PERFORMANCE AND RELIABILITY.** 3821PLUS TECHNOLOGY HAS UNDERGONE EXTENSIVE TESTING TO ASSURE ACCURACY, RELIABILITY, AND UNSURPASSED COMPATIBILITY

Paradyne's COMSPHERE 3821Plus modem is designed to save you time, money, and space — while providing you with the utmost in functionality, configurability, and ease of use. With data rates up to 33.6 Kbps, the COMSPHERE 3821Plus fax modem will optimize central site connections with any branded remote unit, saving you data transfer time and network tolls. Because it supports Enhanced Throughput Cellular (ETC[®]) protocol, you can be assured of optimal data speed in both wire and wireless applications. In addition, the COMSPHERE 3821Plus' high-density card design packs three modems on a single card, allowing you to put up to 48 modems in one 16 slot 3000 Carrier, reducing space requirements by as much as 67 percent.

The COMSPHERE 3821Plus fax modem covers the full spectrum of central site and/or high-density dial requirements. Perfect for both mid-sized or large companies with local or distributed networks, the 3821Plus offers tremendous growth opportunity without a large initial investment. Besides being fast, economical, and space saving, the 3821Plus maximizes functionality with award-winning COMSPHERE Software-Defined (SD) architecture. The 3821Plus also incorporates exceptional security features to ensure that data confidentiality and integrity are never an issue. When you add the versatility of the COMSPHERE 6700 Network Management System and the remote accessibility of COMSPHERE 3800 modem products, the 3821Plus lets you control your network from virtually anywhere in the world! The 3821Plus is the ideal central site choice for speed, economy, and control. Combine it with COMSPHERE 3825Plus external units for superior results!



HIGH-DENSITY CENTRAL SITE SOLUTION

FEATURES

- ITU V.34 SUPPORTING DATA RATES UP TO 33.6 Kbps
- HIGH-DENSITY CARD INCORPORATES THREE V.34 MODEMS, 48 IN A SINGLE 16 SLOT 3000 CARRIER
- SOFTWARE-DEFINED ARCHITECTURE
- REMOTE CONFIGURATION, CONTROL, AND STATUS VIA THE COMSPHERE 6700 NMS OR SHARED DIAGNOSTIC CONTROL PANEL
- SECURITY FOR ORIGINATE, ANSWER, AND CALL-BACK DATA TRANSFERS
- ENHANCED THROUGHPUT CELLULAR (ETC®) PROTOCOL
- FAX SUPPORTS GROUP 3, CLASS 1 AND CLASS 2 FAX
- DIALING CAPABILITIES INCLUDE: ITU V.25 bis, AT COMMANDS, AND 6700 NETWORK MANAGEMENT OR SHARED DIAGNOSTIC CONTROL PANEL
- FULL COMPLEMENT OF SELF TESTS, LOCAL AND REMOTE LOOPBACKS, INCLUDING COMPLIANCE WITH ITU V.54

SPECIFICATIONS

Data Line Modulations

ITU V.34, 33.6 Kbps, 31.2 Kbps, 28.8 Kbps, 26.4 Kbps, 24 Kbps, 21.6 Kbps, 16.8 Kbps, 14.4 Kbps, 12 Kbps, 9.6 Kbps, 7.2 Kbps, 4.8 Kbps and 2.4 Kbps TCM, synchronous/asynchronous
V.32terbo*, 19.2 Kbps, 16.8 Kbps TCM, synchronous/asynchronous
ITU V.32bis, 14.4 Kbps, 12 Kbps, 9,600 bps, 7,200 bps TCM, 4,800 bps Quadrature Amplitude Modulation (QAM), synchronous/asynchronous
ITU V.32, 9,600 bps, 4,800 bps QAM, synchronous/asynchronous
ITU V.22bis, 2,400 bps QAM, synchronous/asynchronous
ITU V.22, 1,200 bps QAM, synchronous/asynchronous, Differential Phase-Shift Keyed (DPSK)
AT&T 212A, 1,200 bps, synchronous/asynchronous, DPSK
AT&T 103J, 300 bps, asynchronous, FSK
ITU V.21, 300 bps, asynchronous, FSK

Fax

Group 3, Class 1, Class 2, V.17, V.29, V.27ter

Auto-Mode

V.34, V.32terbo*, V.32bis, V.32, V.22bis, V.22, AT&T 212A, 103J

Auto Rate (Fall back/forward)

33.6 Kbps, 31.2 Kbps, 28.8 Kbps, 26.4 Kbps, 24 Kbps, 21.6 Kbps, 19.2 Kbps, 16.8 Kbps, 14.4 Kbps, 12 Kbps, 9,600 bps, 7,200 bps, and 4,800 bps

DTE Rates (Asynchronous)

115.2 Kbps, 76.8 Kbps, 57.6 Kbps, 38.4 Kbps, 28.8 Kbps, 19.2 Kbps, 14.4 Kbps, 12 Kbps, 9,600 bps, 7,200 bps, 4,800 bps, 2,400 bps, 1,200 bps, and 300 bps

DTE Interface

EIA/TIA 232E/ITU V.24/ISO 2110

Special Functions

3000-number password access security directory
V.13 Simulated Carrier Control
V.14 asynchronous-to-synchronous conversion
ETC (Enhanced Throughput Cellular)

Dimensions

Weight: 1.5 lbs.
Height: 1"
Width: 7.37"
Depth: 14.37"

Error Control

ITU V.42
MNP 2-4

Data Compression

ITU V.42bis
MNP Class 5

Certification

Telco
FCC Part 6 (USA)
DOC (Canada)

Safety

UL (USA)
CSA (Canada)

Emissions

FCC Part 15, Class A

3000 Carrier Size

Height: 10.5"
Width: 19"
Depth: 14"

Installation of the 3821Plus requires a 3821 Kit Assembly for the 3000 Carrier. The Kit Assembly includes interface cards required to break out three DTE ports from the single modem card. Each Kit Assembly covers one-half of the 3000 Carrier, or eight cards (24 modems).

V.32terbo is a Paradyne proprietary modulation.

A few more reasons to connect with Paradyne—the industry leader and winner of these awards for modem products.



MOD-3821-4-1201

For additional information on this or any Paradyne product or service, contact the office nearest you. Or, dial 800 727 2396 (USA and Canada) or +1 727 530 8623 (Worldwide). For International locations, check the Paradyne Web Site at www.paradyne.com/buy

Specifications subject to change without notice. Paradyne, COMSPHERE and ETC are registered trademarks of Paradyne Corporation. All other trademarks or service marks are the property of their respective owners. © Paradyne Corporation 2001.

PARADYNE®