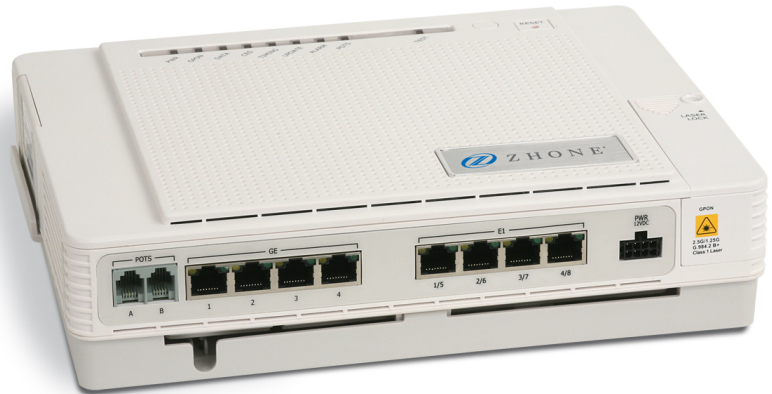


Standard's based GPON ONT for small business deployments

- ✓ *Standard ITU G.984 GPON*
- ✓ *Indoor deployment*
- ✓ *Triple-Play QoS*
- ✓ *Multicast video*
- ✓ *T1/E1 support*
- ✓ *VoIP with CLASS 5 Features*



Zhone's indoor business GPON ONT is a standards based ONT designed with the needs of a small business in mind. T1/E1 circuit emulation over IP allows traditional circuit services over a fiber network and Gigabit Ethernet port bring data services into the building.

The 5100 series of Zhone GPON ONT is a standards based GPON ONT designed for indoor deployment. The 5120 is designed for small business deployments providing 8 T1/E1 interfaces that use standard PWE3 for circuit emulation over a packet network and one Gigabit Ethernet ports.

Technical Specifications

Dimensions

- 66mm x 267mm x 200mm

Power

- 48VDC input

Interfaces

- GPON
 - SC/APC connector
 - full ITU-T G.984 compliance
- GPON Tx
 - upstream data rate: 1.25 Gbps
 - 1310nm optic
 - Output power: 0.5 to +5 dBm
- GPON Rx
 - Downstream data rate: 2.5 Gbps
 - 1490nm optics
 - Receiver Sensitivity: -27 dBm
 - Input power overload: -8 dBm
- Ethernet
 - RJ-45 Jack
 - 4x10/100/1000 Base-T
 - Meets IEEE 802.3 specifications
 - Auto-MDI/MDIX and auto speed supported
- POTS
 - 2xRJ-11 connector
- T1/E1
 - 4xRJ-48c connector (Each RJ-48 supports 2 T1/E1)

Standards Support

- ITU-T G.984 compliant

Voice Support

- SIP (RFC 3261)
- MEGACO (H.248)
- Codec: G.711 (u-law and A-law), G.729 (A and B)
- DTMF dialing
- 5 REN per line
- Echo cancellation
- Voice Activity Detection and Comfort Noise Insertion
- Caller ID, Call Waiting, Call Forwarding, Call Transfer, Three Way Calling, Distinctive Ringing
- G.711 fallback for FAX
- Pulse Metering
- T.30 and T.38 FAX
- DHCP client or static IP configuration

Protocol Support

- QoS
 - Ethernet bridging/switching per IEEE 802.1D/802.1Q
 - Traffic management (priority queuing and traffic shaping)
 - QoS with support for IEEE 802.1p + DSCP
- VLANs
 - Per port IEEE 802.1Q VLAN ID processing
 - VLAN tagging/untagging
 - VLAN Stacking (QinQ)
 - VLAN Switching
- IPTV
 - IGMP Snooping
 - VLAN support
- Layer 2
 - 802.3n flow control
 - Automatic MAC learning and aging
 - Support for up to 512 MAC address entries
 - MAC limiting
 - Broadcast storm control
- T1/E1
 - Pseudowire Emulation End to End (PWE3)
 - Structure Agnostic or Structure Aware
 - Synchronous timing or Adaptive timing

Management

- OMCI complies with G.984.4

Regulatory Compliance

- CE

Operating Requirements

- Temperature: -5°C - +45°C
- Humidity: 5 ~ 90% relative humidity

Ordering Information

ZNID-GPON-5120

Indoor GPON ONT, 4xGE, 2xPOTS, 8xT1/E1

Zhone Technologies, Inc.

7195 Oakport Street

Oakland, CA 94621

1 510.777.7000

www.zhone.com

For more information about Zhone and its products, please visit the Zhone Web site at www.zhone.com or e-mail info@zhone.com

Zhone, the Zhone logo, and all Zhone product names are trademarks of Zhone Technologies, Inc. Other brand and product names are trademarks of their respective holders. Specifications, products, and/or product names are all subject to change without notice. Copyright 2011 Zhone Technologies, Inc. All rights reserved.

