



## **Hotwire® 6205 ADSL Modem Installation Instructions**

Document Number 6205-A2-GZ40-00

July 2004

---

### **Introduction**

Congratulations on becoming the owner of a Hotwire® ADSL USB Modem. You will now be able to surf the Internet via the modem's state-of-the-art ADSL connection.

This document will show you how to set up the Hotwire 6205 ADSL Modem, and how to customize its configuration to get the most out of this product.

### **Features**

- The Hotwire 6205 ADSL Modem offers up to 8 Mbps downstream and 800 kbps upstream.
- A "Plug-N-Play" USB port provides Internet connectivity to your PC.
- The Hotwire 6205 ADSL Modem supports Windows 98FE/SE, Windows 2000, Windows Millennium, and Windows XP.

### **System Requirements**

In order to use the Hotwire 6205 ADSL Modem for Internet access, you must have the following:

- ADSL service subscription from your Internet Service Provider (ISP).
- One computer containing a free USB (Universal Serial Bus) port.
- USB driver provided in this package

#### **Caution:**

- Do not open the housing!
- Use only the power supply provided with this device
- Use only the cables provided with this device and do not perform any modifications on them

---

## Getting to Know the Hotwire 6205 ADSL Modem

### Parts List

Your Hotwire 6205 ADSL Modem package includes:

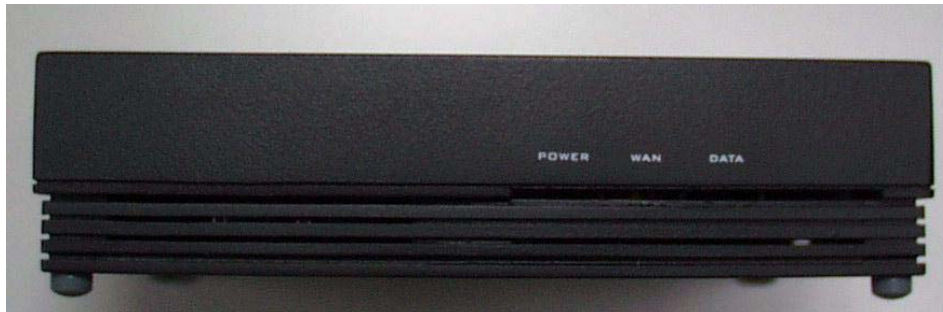
- Hotwire 6205 unit
- RJ11 ADSL cable
- USB Cable
- CD-ROM



---

## Front Panel

The front panel contains LED indicators that show the status of the unit.



LED	Color	Status	Description
POWER	Yellow	On	Your Modem is powered ON
		Off	Your Modem is powered OFF
WAN	Yellow	On	Up — Connected successfully
		Blinking	Handshaking — The modem is trying to connect
		Off	Down — Disconnected
DATA	Yellow	Blinking	Data transfer over ADSL line

## Rear Panel

The rear panel contains the ports for the unit's data and power connections.



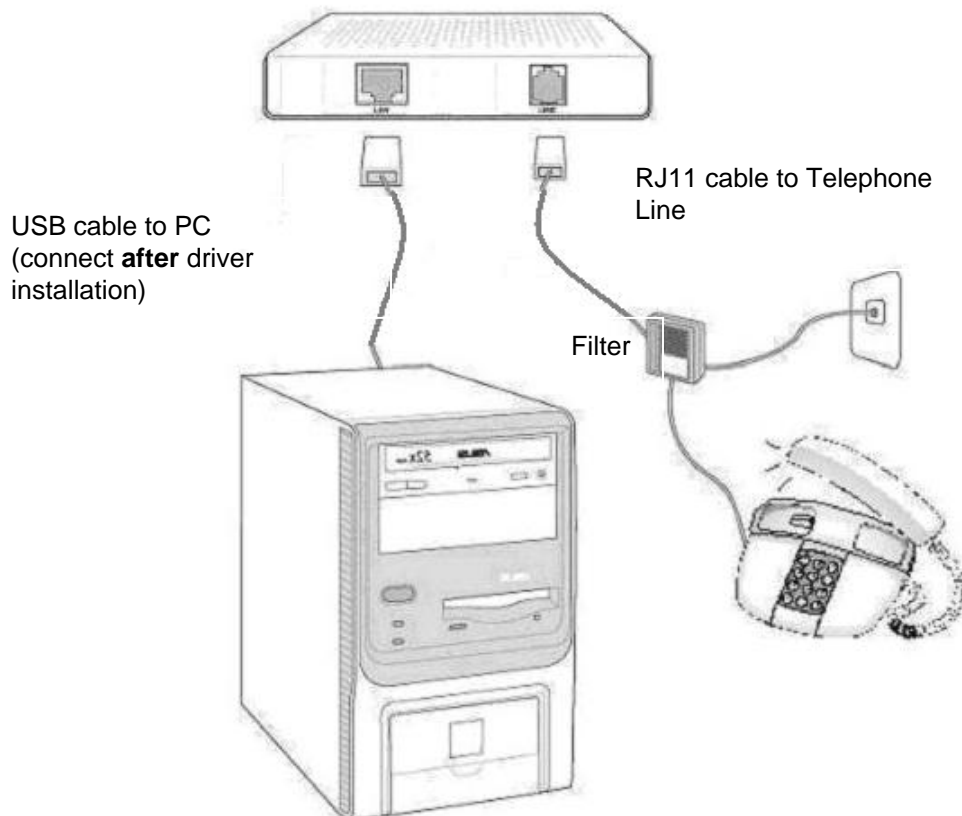
Port	Description
USB	USB port, to your PC
LINE	RJ11 outlet, for ADSL line connection.

---

## Getting Started

### Hardware Connection

Connect the RJ11 telephone cable as shown below.



### Connect Line Filter (Optional)

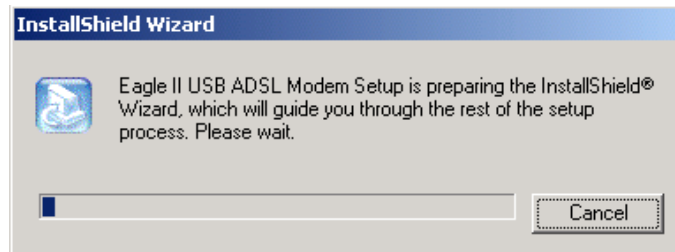
1. Unplug the phone cable from the phone jack of your phone and plug it into the "WALL" jack of the Y-Line Filter.
2. Plug the ADSL cable into the "ADSL" jack of the Y-Line Filter and the Modem.
3. Plug another phone cable into the "PHONE" jack of the Y-Line Filter and your phone.

**Warning: DO NOT CONNECT THE USB CABLE INTO THE UNIT UNTIL THE DRIVER INSTALLATION IS COMPLETE.**

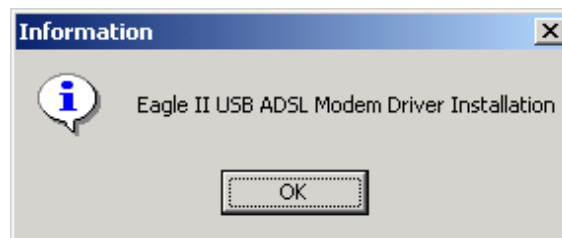
---

## USB Driver Installation

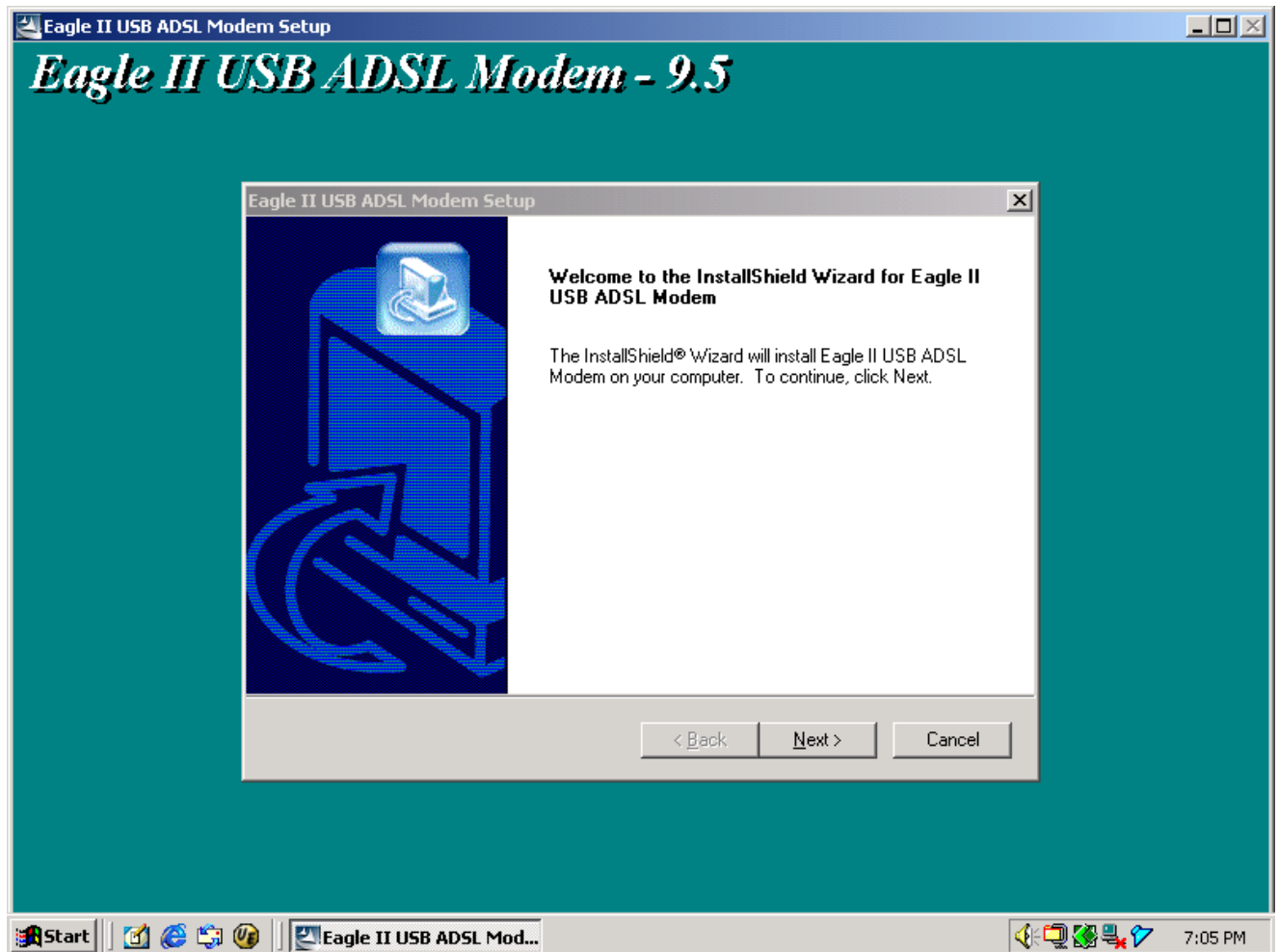
1. Insert the provided CD. The CD should automatically start the driver installation. If autorun is disabled, double-click "**Setup.exe**" in the root directory of the CD.



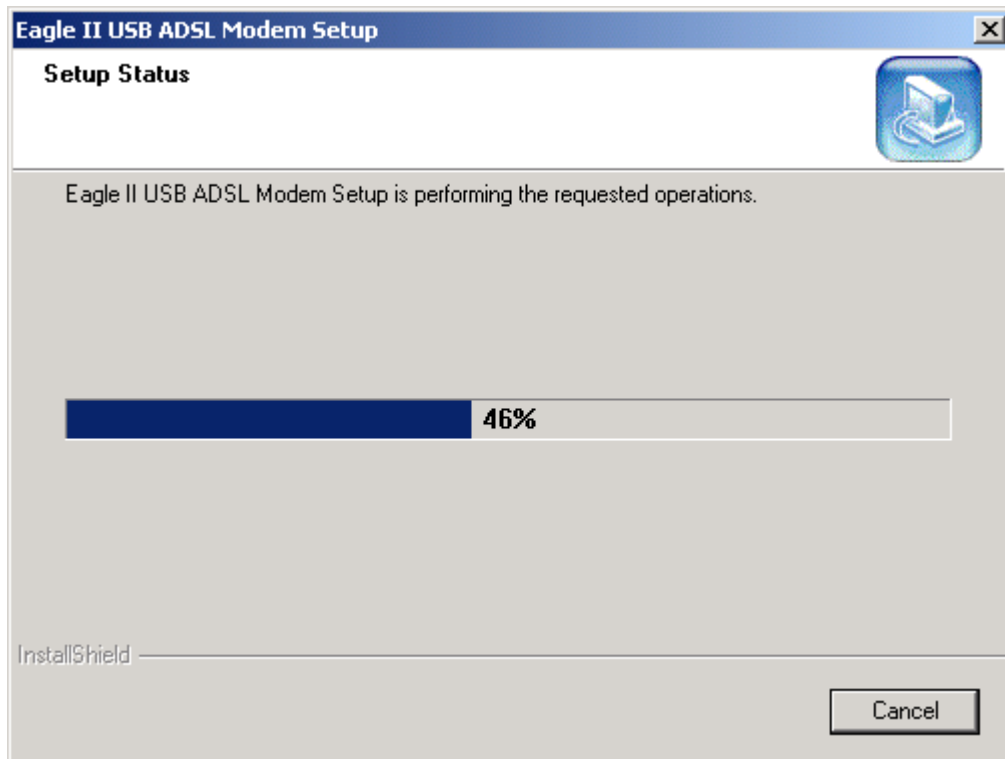
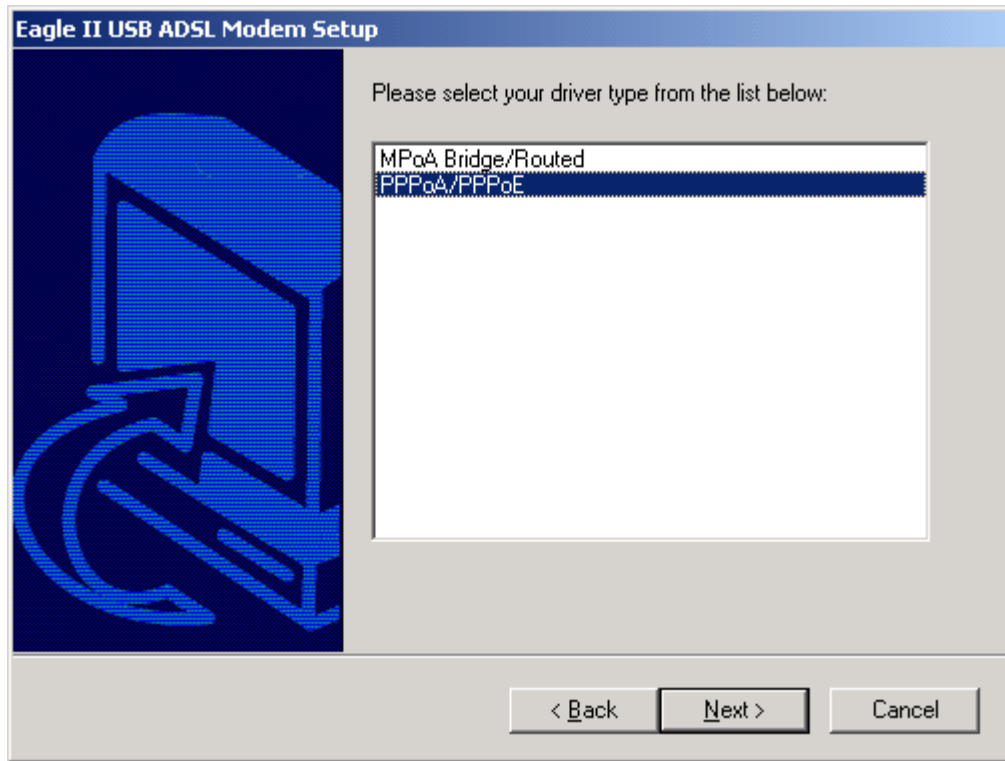
2. Click on **OK** when the Information pop-up window appears.



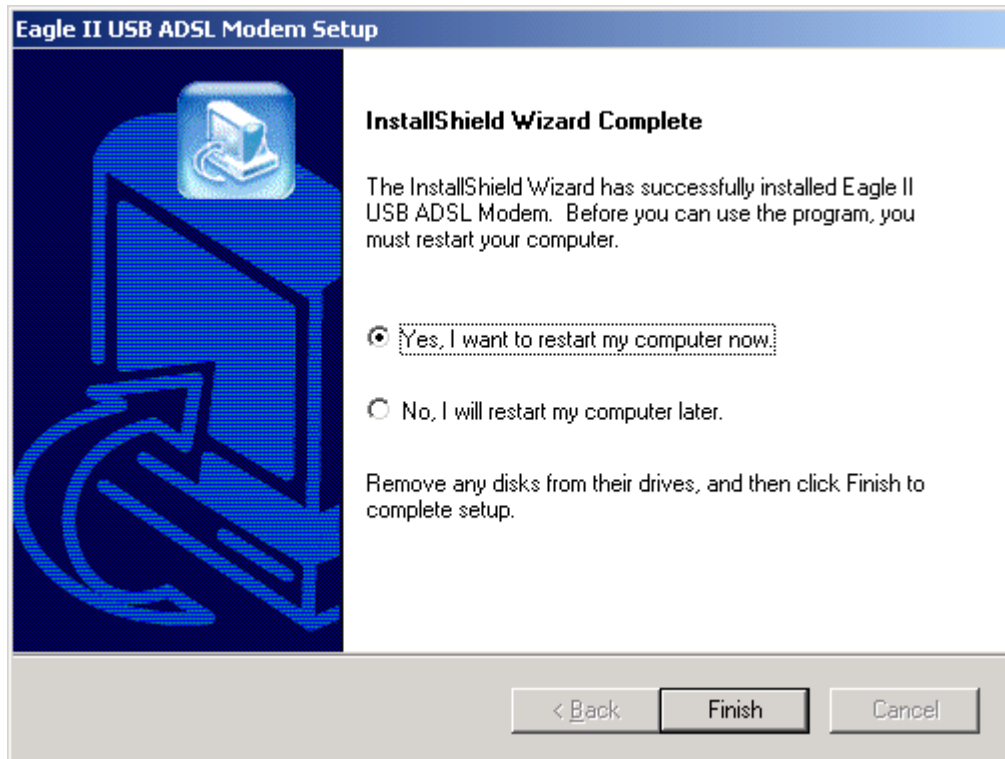
3. Click on **Next** when the modem setup windows appears.



4. Choose the proper driver type: **MPoA Bridge/Routed** or **PPPoA/PPPoE**. Then click **Next**.



5. Click on **Finish** to restart your computer to complete the installation.



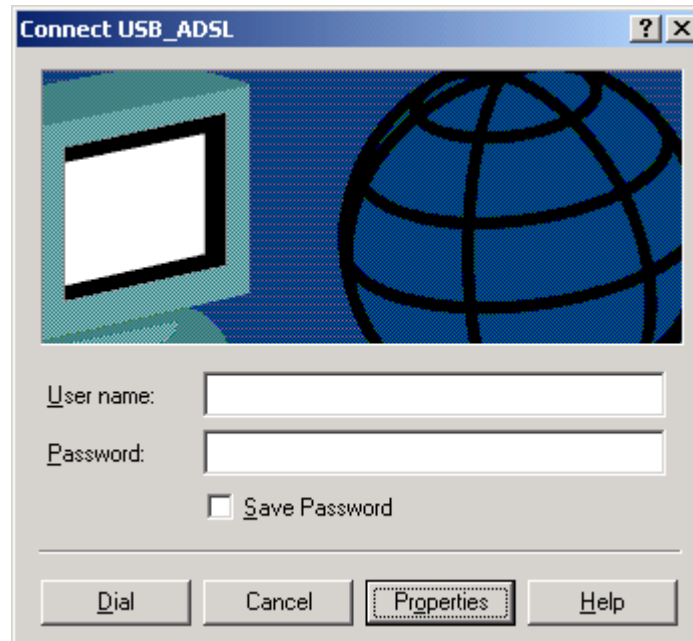
6. After your computer restarts, there might be a pop-up message to remind you to plug-in USB modem. Click on **OK** and plug in your USB modem.



7. After you attach the USB modem to your computer, there will be a small triangle icon on the right-bottom taskbar of your screen. If there is no ADSL connection, it will be red. If the ADSL connection is established, it will be green.

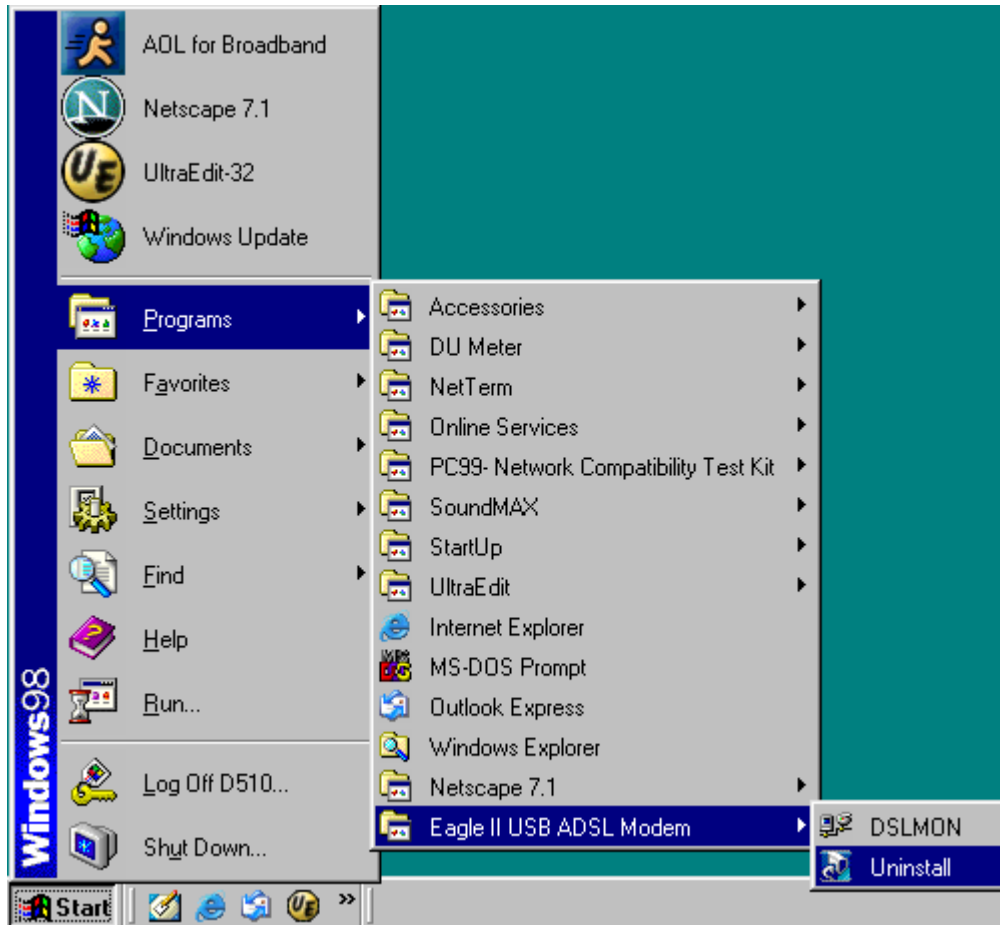


- 
8. If you install **PPPoA/PPPoE**, there will be a dial-up icon in your desktop to connect your ISP. Please contact your ISP to get the correct user name and password for Internet access.

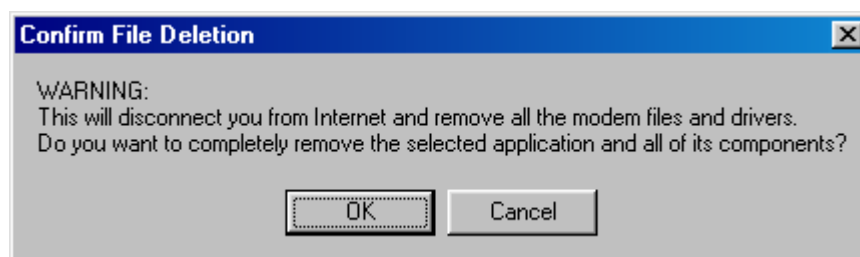


## USB Driver Uninstallation

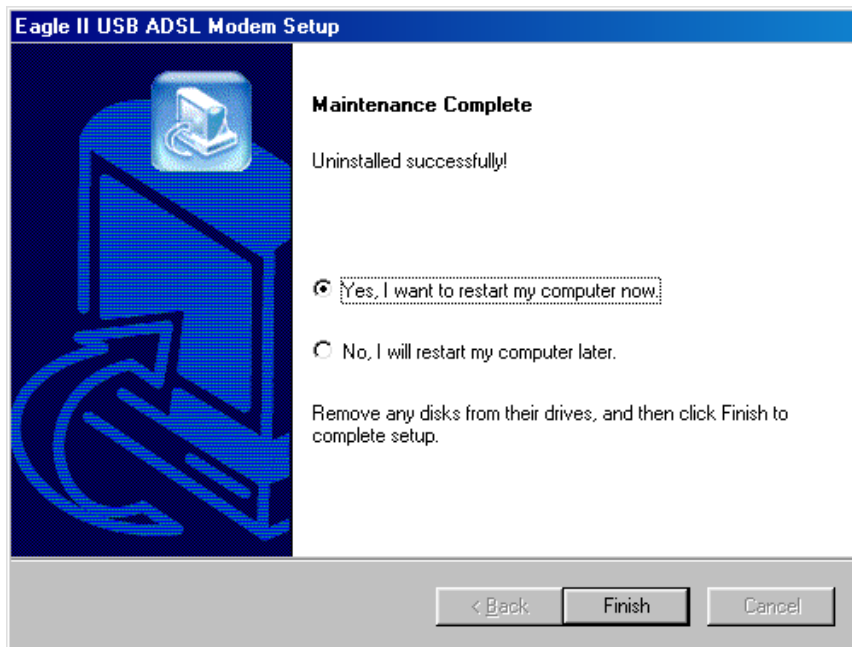
1. Click on **Uninstall** from Windows **Start** menu.



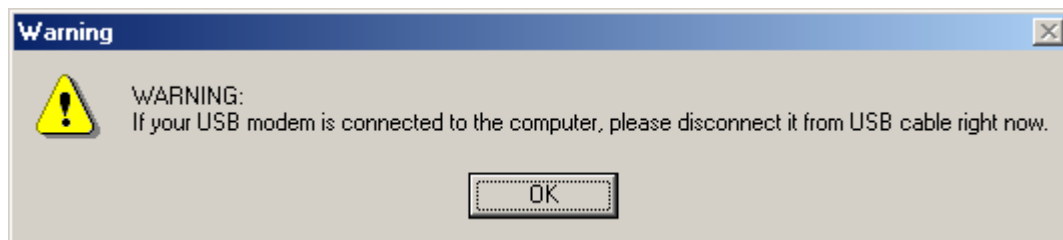
2. Keep your modem connected and click on **OK**.



3. Click on **Finish** to complete the Uninstallation.



4. Unplug your USB modem and click on **OK**.



---

## Device Information

This chapter describes how to obtain Hotwire 6205 system information when you double-click the small triangle icon on the right-bottom of the taskbar.



After you click the icon, you'll see the status page, which will tell you that the modem is idle, handshaking or operational.

