



Z H O N E™

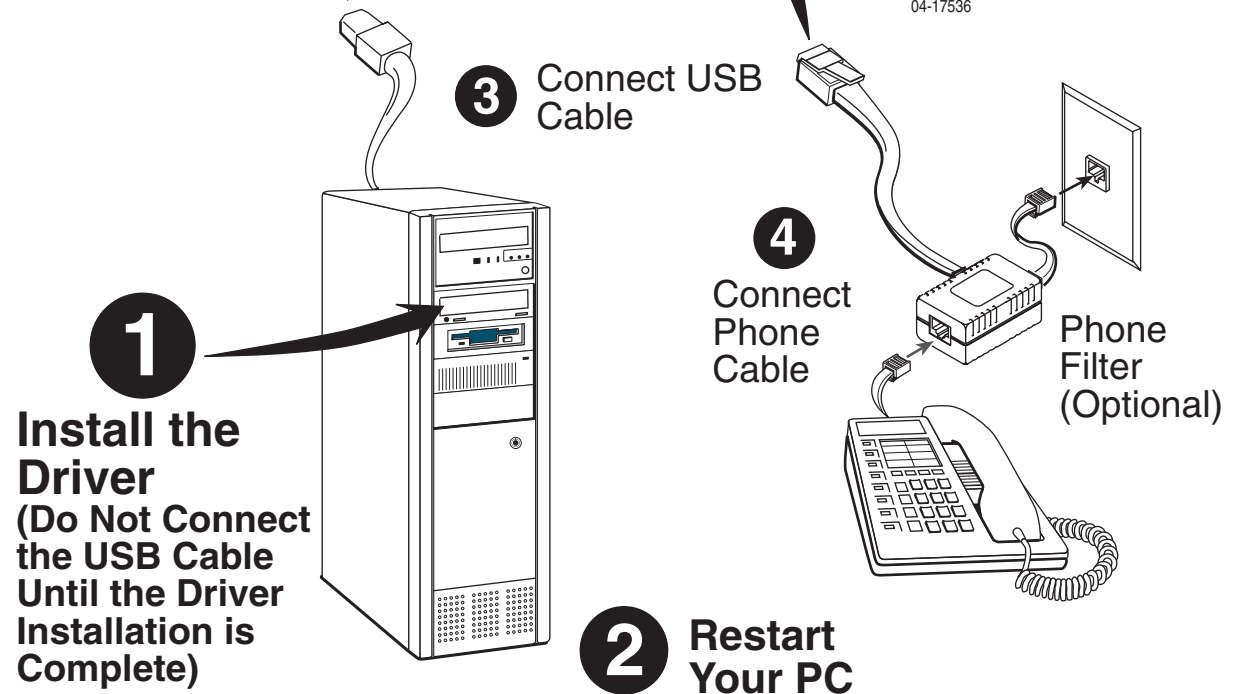
6205 ADSL Modem Quick Installation Instructions

Document Number 6205-A2-ZZ41-10

November 2005

Installation

- 1 Insert the provided CD in your PC and install the modem driver. Select the driver type specified by your service provider.
- 2 When the driver installation is complete, restart your PC.
- 3 Connect the USB cable to the modem and a free USB port on your PC.
- 4 Unplug the phone cable from the phone jack of your phone and plug it into the jack of the Y-Line Filter labeled "WALL". Plug the ADSL cable into the modem and the jack of the Y-Line Filter labeled "ADSL". Plug another phone cable into your phone and the the jack of the Y-Line Filter labeled "PHONE".



See the Installation Instructions on the CD for more information.



6205-A2-ZZ41-10