

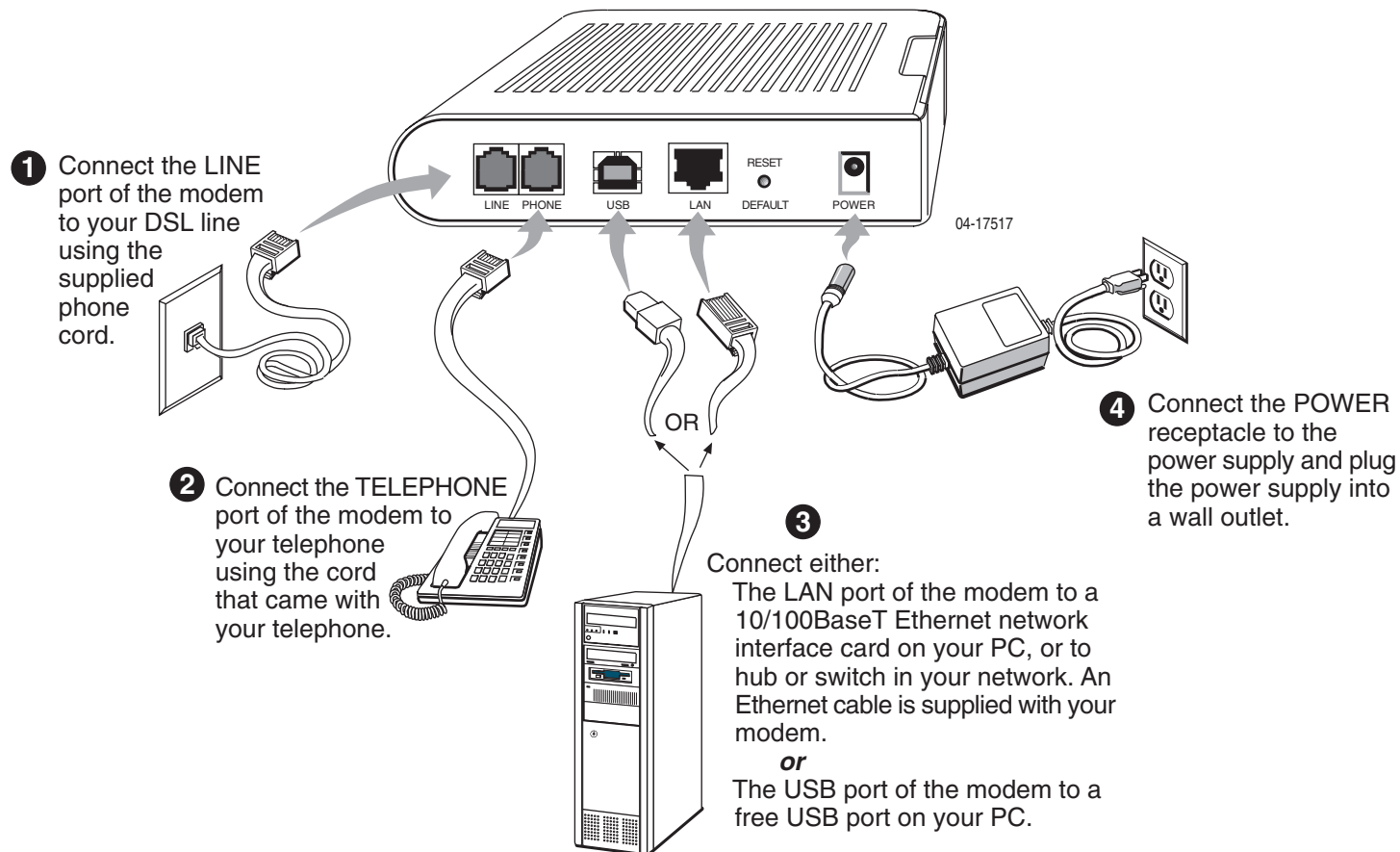


Z H O N E™

6210 Bridge and 6211 Bridge/Router Quick Installation Instructions

Document Number 6210-A2-ZZ13-10

December 2005



If you connected the USB port of the modem to your PC, the Found New Hardware Wizard appears on your computer screen. Insert the supplied CD in your CD drive and install the USB drivers on it as directed by the Wizard.

See the user's guide on the CD for important safety instructions and more information.



6210-A2-ZZ13-10