



GrandVIEW® EMS 4.3 for Solaris Installation Instructions

Document Number 7890-A2-GN14-00

February 2005

Contents

Software and Firmware License Agreement	2
Introduction	3
Product Documentation	4
Minimum Requirements	4
Updating an Existing Installation	4
Preparation	5
Canceling the Installation	10
Installing GrandVIEW EMS	10
Starting GrandVIEW EMS	28
Logging On	29
Uninstalling GrandVIEW EMS	29
Operating System Modifications	30
Warranty, Sales, Service, and Training Information	31
Document Feedback	31
Trademarks	31

Software and Firmware License Agreement

ONCE YOU HAVE READ THIS LICENSE AGREEMENT AND AGREE TO ITS TERMS, YOU MAY USE THE SOFTWARE AND/OR FIRMWARE INCORPORATED INTO THE PARADYNE PRODUCT. BY USING THE PARADYNE PRODUCT YOU SHOW YOUR ACCEPTANCE OF THE TERMS OF THIS LICENSE AGREEMENT.

IN THE EVENT THAT YOU DO NOT AGREE WITH ANY OF THE TERMS OF THIS LICENSE AGREEMENT, PROMPTLY RETURN THE UNUSED PRODUCT IN ITS ORIGINAL PACKAGING AND YOUR SALES RECEIPT OR INVOICE TO THE LOCATION WHERE YOU OBTAINED THE PARADYNE PRODUCT OR THE LOCATION FROM WHICH IT WAS SHIPPED TO YOU, AS APPLICABLE, AND YOU WILL RECEIVE A REFUND OR CREDIT FOR THE PARADYNE PRODUCT PURCHASED BY YOU.

The terms and conditions of this License Agreement (the “Agreement”) will apply to the software and/or firmware (individually or collectively the “Software”) incorporated into the Paradyne product (the “Product”) purchased by you and any derivatives obtained from the Software, including any copy of either. If you have executed a separate written agreement covering the Software supplied to you under this purchase, such separate written agreement shall govern.

Paradyne Corporation (“Paradyne”) grants to you, and you (“Licensee”) agree to accept a personal, non-transferable, non-exclusive, right (without the right to sublicense) to use the Software, solely as it is intended and solely as incorporated in the Product purchased from Paradyne or its authorized distributor or reseller under the following terms and conditions:

1. **Ownership:** The Software is the sole property of Paradyne and/or its licensors. The Licensee acquires no title, right or interest in the Software other than the license granted under this Agreement.
2. Licensee shall not use the Software in any country other than the country in which the Product was rightfully purchased except upon prior written notice to Paradyne and an agreement in writing to additional terms.
3. The Licensee shall not reverse engineer, decompile or disassemble the Software in whole or in part.
4. The Licensee shall not copy the Software except for a single archival copy.
5. Except for the Product warranty contained in the manual, the Software is provided “AS IS” and in its present state and condition and Paradyne makes no other warranty whatsoever with respect to the Product purchased by you. THIS AGREEMENT EXPRESSLY EXCLUDES ALL OTHER WARRANTIES, WHETHER EXPRESS OR IMPLIED, OR ORAL OR WRITTEN, INCLUDING WITHOUT LIMITATION:
 - a. Any warranty that the Software is error-free, will operate uninterrupted in your operating environment, or is compatible with any equipment or software configurations; and

-
- b. ANY AND ALL IMPLIED WARRANTIES, INCLUDING WITHOUT LIMITATION IMPLIED WARRANTIES OF MERCHANTABILITY, FITNESS FOR A PARTICULAR PURPOSE AND NON-INFRINGEMENT.

Some states or other jurisdictions do not allow the exclusion of implied warranties on limitations on how long an implied warranty lasts, so the above limitations may not apply to you. This warranty gives you specific legal rights, and you may also have other rights which vary from one state or jurisdiction to another.

6. IN NO EVENT WILL PARADYNE BE LIABLE TO LICENSEE FOR ANY CONSEQUENTIAL, INCIDENTAL, PUNITIVE OR SPECIAL DAMAGES, INCLUDING ANY LOST PROFITS OR LOST SAVINGS, LOSS OF BUSINESS INFORMATION OR BUSINESS INTERRUPTION OR OTHER PECUNIARY LOSS ARISING OUT OF THE USE OR INABILITY TO USE THE SOFTWARE, WHETHER BASED ON CONTRACT, TORT, WARRANTY OR OTHER LEGAL OR EQUITABLE GROUNDS, EVEN IF PARADYNE HAS BEEN ADVISED OF THE POSSIBILITY OF SUCH DAMAGES, OR FOR ANY CLAIM BY ANY THIRD PARTY.
7. The rights granted under this Agreement may not be assigned, sublicensed or otherwise transferred by the Licensee to any third party without the prior written consent of Paradyne.
8. This Agreement and the license granted under this Agreement shall be terminated in the event of breach by the Licensee of any provisions of this Agreement.
9. Upon such termination, the Licensee shall refrain from any further use of the Software and destroy the original and all copies of the Software in the possession of Licensee together with all documentation and related materials.
10. This Agreement shall be governed by the laws of the State of Florida, without regard to its provisions concerning conflicts of laws.

Introduction

GrandVIEW® EMS provides the scaleable technology needed to deliver and manage network services and resources, including:

- Network device discovery
- Device management
- Data Collection
- Logical and physical topological data views
- Alarm and performance management
- Full FCAPS support

GrandVIEW EMS is a complete, end-to-end solution that lets you quickly and easily manage all facets of a complex network.

Product Documentation

Documentation for Paradyne products is available at www.paradyne.com. Select *Support* → *Technical Manuals*.

Documentation for GrandVIEW EMS includes:

[7890-A2-GB22](#)

GrandVIEW EMS User's Guide

[7890-A2-GN13](#)

GrandVIEW EMS for Windows Installation Instructions

To order a paper copy of a Paradyne document, or to speak with a sales representative, please call 1-727-530-2000.

The /docs directory of GrandVIEW EMS Disk 1 contains the user's guide and documentation for the Dorado Redcell software that is part of GrandVIEW EMS:

- Redcell Common Services Administration Guide
- Redcell Installation Guide (Do not use for GrandVIEW installation)
- Redcell Product Suite User Guide

See those documents for information about any matters of maintenance or operation not covered in the GrandVIEW EMS documentation. Use this document for the installation of GrandVIEW EMS and its associated Dorado Redcell software.

Minimum Requirements

Server requirements are for a system with all GrandVIEW components on one server.

Server 5,000 DSL Ports	Server 30,000 DSL Ports	Server 50,000 DSL Ports	Client
<ul style="list-style-type: none">■ Sunfire V280■ Single 900 MHz Processor■ 1 GB RAM■ One 73 GB Disk■ Solaris 8 (02/04)	<ul style="list-style-type: none">■ Sunfire V280■ Dual 900 MHz Processors■ 2 GB RAM■ Two 73 GB Disks■ Solaris 8 (02/04)	<ul style="list-style-type: none">■ Sunfire V480■ Quad 900 MHz Processors■ 4 GB RAM■ Two 73 GB Disks■ Solaris 8 (02/04)	<ul style="list-style-type: none">■ Any Sun workstation■ One 600 MHz processor■ 512 MB RAM■ Solaris 8 (02/04)

Updating an Existing Installation

GrandVIEW EMS 4.3 is not compatible with earlier releases, since it uses a different database. You must uninstall previous versions of GrandVIEW before you can install 4.3.

Preparation

The following sections describe how to install Oware (the console for the application server and mediation agent software that must operate in the background for GrandVIEW EMS) and GrandVIEW EMS.

The following are some preliminary items of importance:

- Your server must have a name that can be resolved as an IP address (using a DNS or a host file).
- Your Oware server should never be named localhost.
- While Oware can automate preserving your database information, it does not preserve *.properties files. The best practice is to back up these files, in addition to your database, before installing Oware.
- If you have just uninstalled, you must reboot before reinstalling.
- Ensure that hard and soft **file descriptor** limits are set to **1024**.
- Install from a local drive. Installation over a slow network may cause database corruption.

Permissions and Settings

The following files must have read permission for the installing user:

```
/etc/inetd.conf  
/etc/services
```

Color Adjustment

Other applications may require color resources that alter GrandVIEW EMS's color appearance. You can limit the competition for colors by selecting "Most colors for applications" in the Solaris Style Manager. You can also limit competing applications' color demands with entries in your .Xdefaults (or equivalent) file. The following sample entries are for FrameMaker and Netscape. Consult the appropriate manuals for other applications whose use of colors must be limited.

```
!FrameMaker ColorMap.  
!  
Maker.targetColorCube: 4  
Maker.minimumColorCube: 3  
Maker.targetExactColors: 4  
Maker.minimumExactColors: 3  
Maker.colorDither: False  
!  
Netscape*maxImageColors: 64
```

Patches Required

Verify that the following patches or higher are installed:

- 108921-12
- 108940-33
- 111721-04
- 112138-01
- 108652-33
- 108921-12
- 108940-24
- 112438-01

The installation script checks to see that the required patches are installed. The patches are supplied on GrandVIEW EMS (Solaris) Disk 1 in the /patches directory.

An alternative way to obtain prerequisite patches is to install the standard Sun recommended patch cluster, which can be downloaded from <http://sunsolve.sun.com/pub-cgi/show.pl?target=patches/patch-access>

Apply patches with the patchadd(1M) utility. You can find instructions for patchadd(1M) in the **man** pages as well as in the Solaris AnswerBook.

Oware requires and is shipped with JDK 1.3.1.

Kernel Parameters

Verify that the following kernel parameters are present in the /etc/system file, and, if kernel parameters have been changed, that a reboot has been performed.

- set noexec_user_stack=1
- set semsys:seminfo_semvmx=32767
- set shmsys:shminfo_shmmni=1024
- set shmsys:shminfo_shmmin=1
- set shmsys:shminfo_shmseg=512
- set semsys:seminfo_semmni=1024
- set semsys:seminfo_semmns=2048
- set semsys:seminfo_semmsl=512
- set msgsys:msginfo_msgmb=65535
- set msgsys:msginfo_msgtql=1024
- set shmsys:shminfo_shmmax=4294967295
- set shmsys:shminfo_shmmin=100

Limitations

Because of a bug in the Sun Solaris JDK (bugid 4281163), the installation process requires access to a Sun X11 environment, even though the Oware installation requires no Java graphics to appear. You can provide X11 access with the following steps:

1. Install software on a Solaris system with a graphics card and monitor.
2. Install software on a Solaris system remotely from a Sun system that has a graphics card and monitor. (Ensure xhost + has been run on the system to which you install this.)
3. Run the non-root phase of the installation from an environment that has access to an xhost. If you are running the installation remotely, be sure to run xhost + on the local system.

When installing the non-root user, the DISPLAY variable must point to the host name where the X11/XServer displays back. You can set the DISPLAY variable from the user install shell from a command line as follows:

```
DISPLAY=<IP address>:0.0  
export DISPLAY
```

The IP Address in the DISPLAY variable would be the host where you display the GUI back from the installation host. You can avoid setting DISPLAY in the non-root user installation by logging out of the machine after the root installation. Then, re-log into the machine as the nonroot user and run the install script to complete the installation. In this case, Solaris sets the DISPLAY variable.

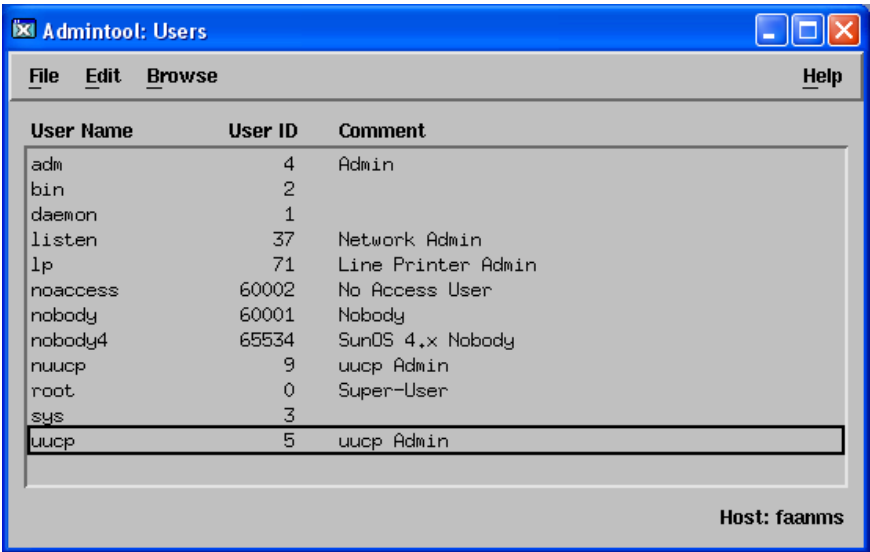
This work-around only works if you log in and log out of the machine where you are installing. Otherwise, you must set the DISPLAY variable yourself.

Creating an EMS Group and User

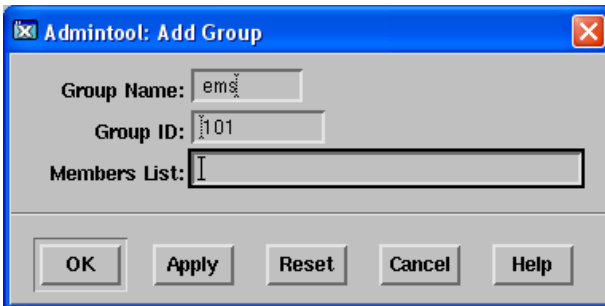
GrandVIEW EMS cannot be installed by the root user. Follow this procedure to create a group and user for installing and running GrandVIEW EMS.

► Procedure

1. Start `admintool`.



2. Select *Browse > Groups*. Existing groups are displayed.
3. Select *Edit > Add*. The Add Group window appears.



4. Enter `ems` for the Group Name and click on OK.
5. Select *Browse > Users*. Existing users are displayed.
6. Select *Edit > Add*. The Add User window appears.

7. Enter or select:

- **User Name** – ems
- **Primary Group** – ems
- **Login Shell** – Korn
- **Password** – Select Normal Password, then type **ems** as the password
- **Home Directory Path** – /opt/ems

Admintool: Add User

USER IDENTITY

User Name:

User ID:

Primary Group:

Secondary Groups:

Comment:

Login Shell: /bin/ksh

ACCOUNT SECURITY

Password:

Min Change: days

Max Change: days

Max Inactive: days

Expiration Date:

(dd/mm/yy)

Warning: days

HOME DIRECTORY

Create Home Dir:

Path:

8. Click on OK.

9. Close admintool.

User Profile

Edit the /opt/ems/.profile file. After the **export PATH** statement, add:

```
. /etc/.dsienv
```

Canceling the Installation

You can abort the installation at any time by clicking on Cancel, then confirming cancellation. However, this is not recommended because it may strand processes that will then need to be manually shut down.

Installing GrandVIEW EMS

CAUTION:

When installing a client on a remote machine with the Oware Management Center (OMC), ensure that the client user is a valid Oware user. If the client does not have Oware application server access, the installation may fail because device driver installation fails. When working with the client after such a failed installation, you cannot see managed objects. Oware reports this failure in the log file (not on the console) so the failure might not be immediately apparent. See Chapter 2, *Add-on and Device Driver Installation* in the *Dorado RedCell Installation Guide* (on GrandVIEW EMS Disk 1) for more information.

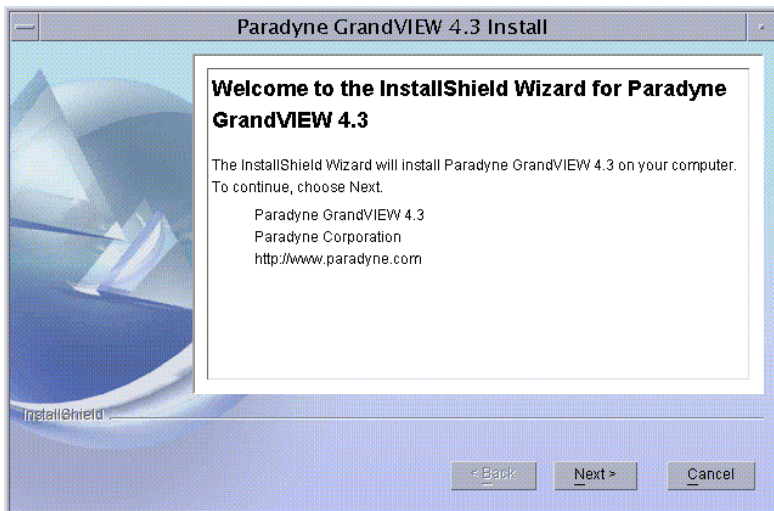
The installation requires two processes: one to install GrandVIEW, and one to install the underlying Dorado Redcell software.

Follow these steps to install GrandVIEW EMS and Dorado Redcell:

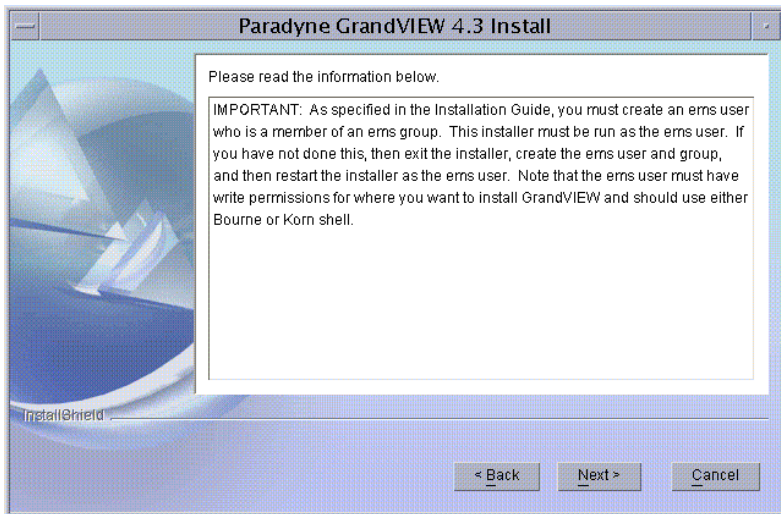
1. Log in as the **ems** user.
2. Load GrandVIEW EMS Disk 1 into your CD drive. Type:

`/cdrom/grandviewR43Sol1/GrandVIEWsetupSolaris.bin`

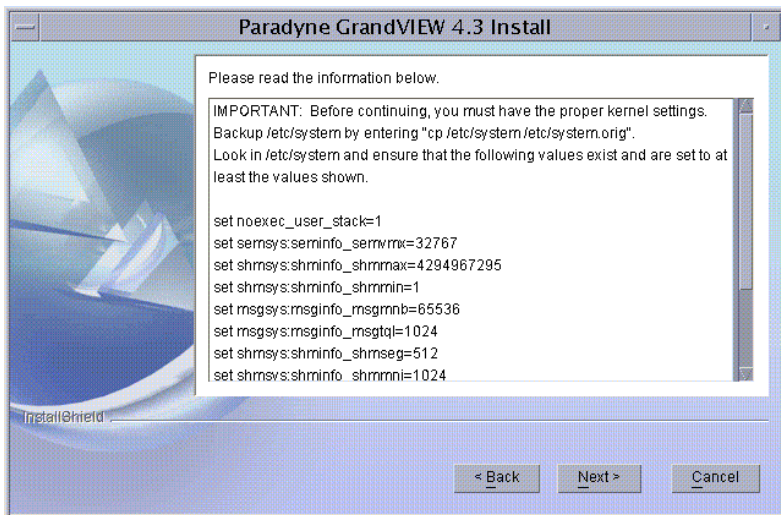
A dialog box appears as the Setup program initializes InstallShield, then a Welcome Screen appears.



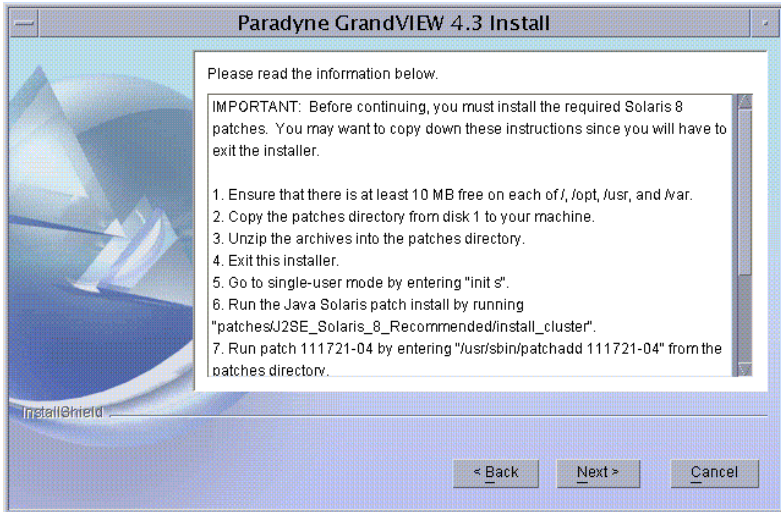
3. Click on Next. The following information screen appears.



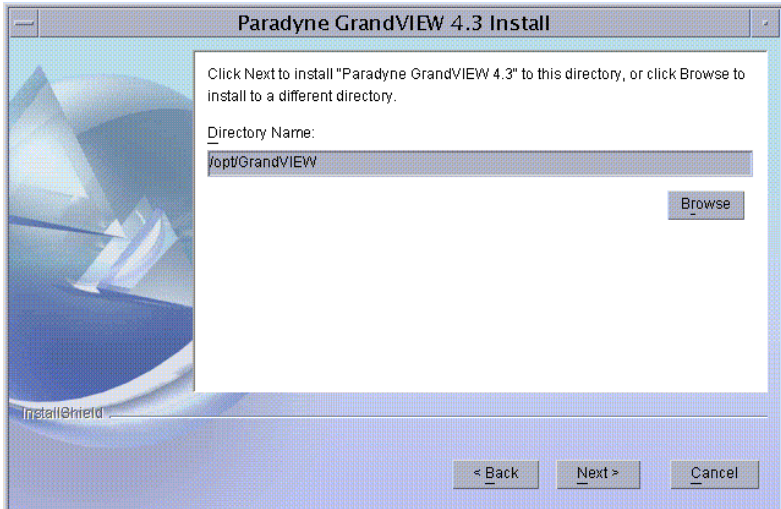
4. Click on Next. The following information screen appears.



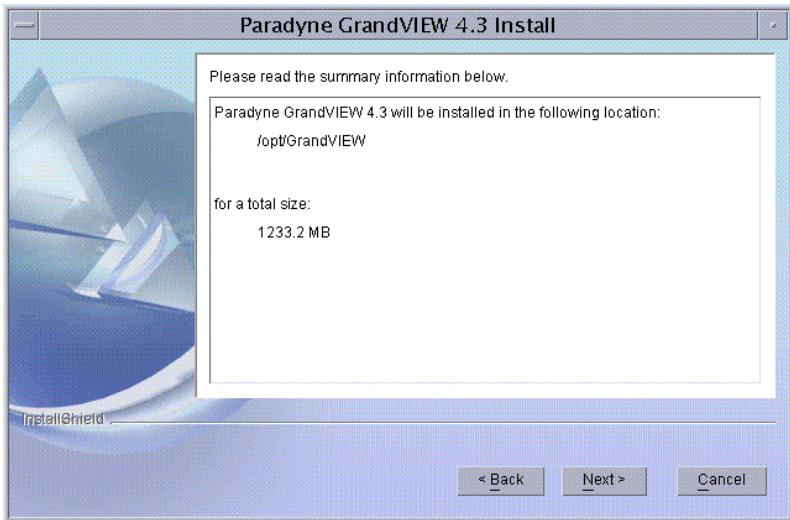
5. Click on Next. The following information screen appears. If you have installed the required patches, proceed with the installation.



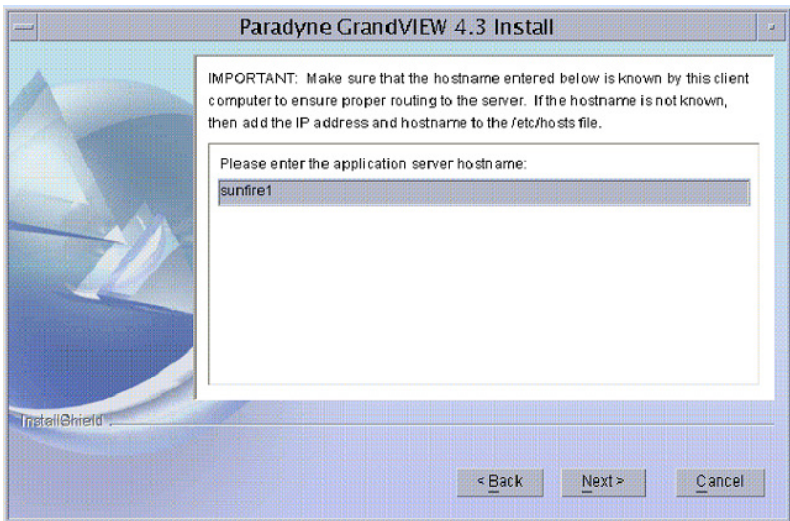
6. Click on Next. Specify the directory where GrandVIEW will be installed.



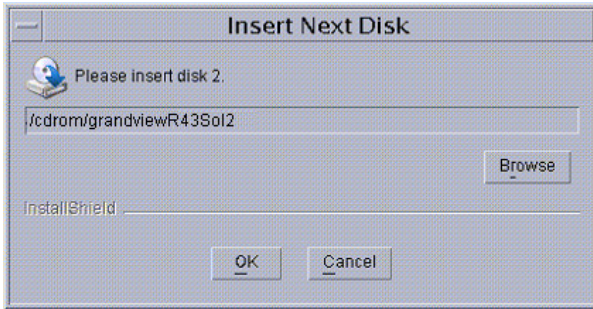
7. Click on Next. A summary screen appears.



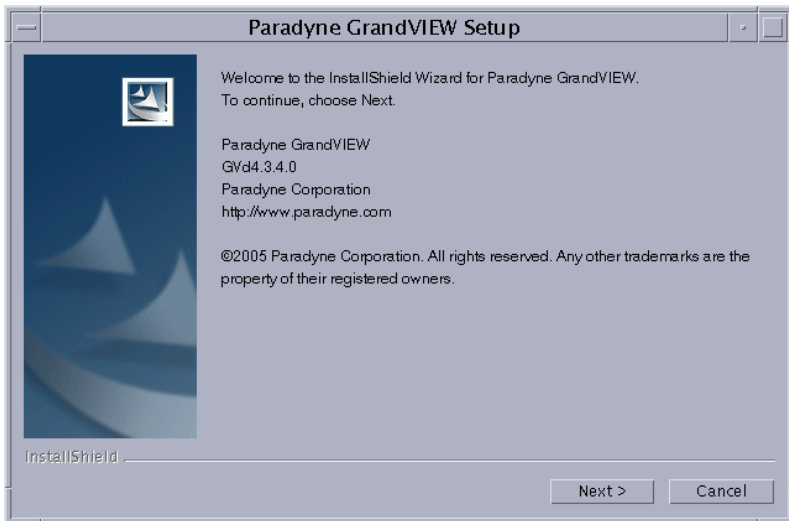
8. Click on Next. Enter the application server hostname.



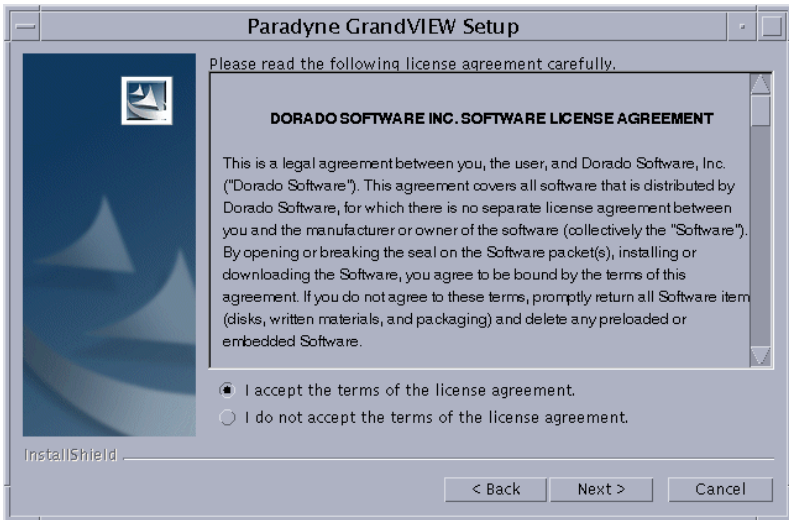
9. Click on Next. The installation screen appears and components are installed. Insert Disk 2 when prompted, and click on OK.



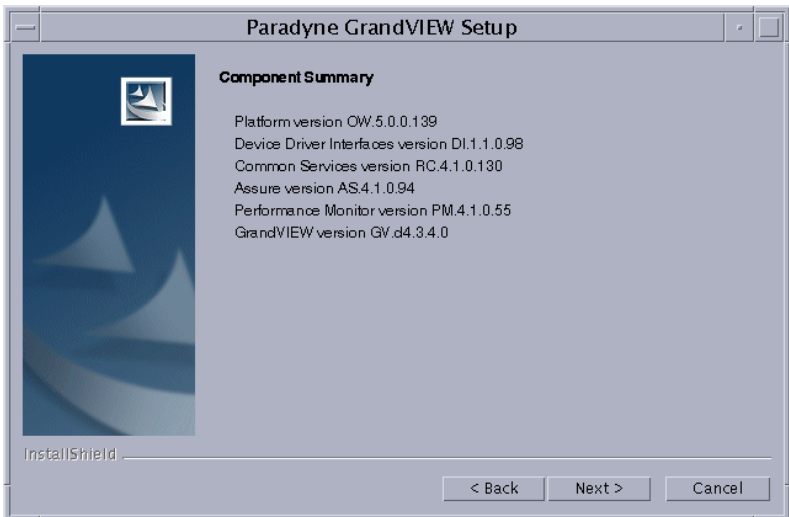
10. When this part of the installation is complete and the button is available for use, click on Next. A second installation wizard setup dialog box appears, then a second welcome screen.



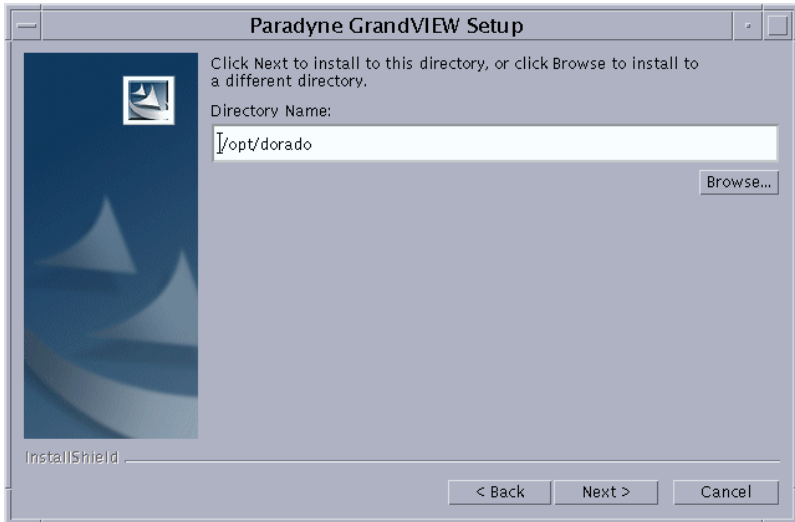
11. Click on Next. The software license agreement appears.



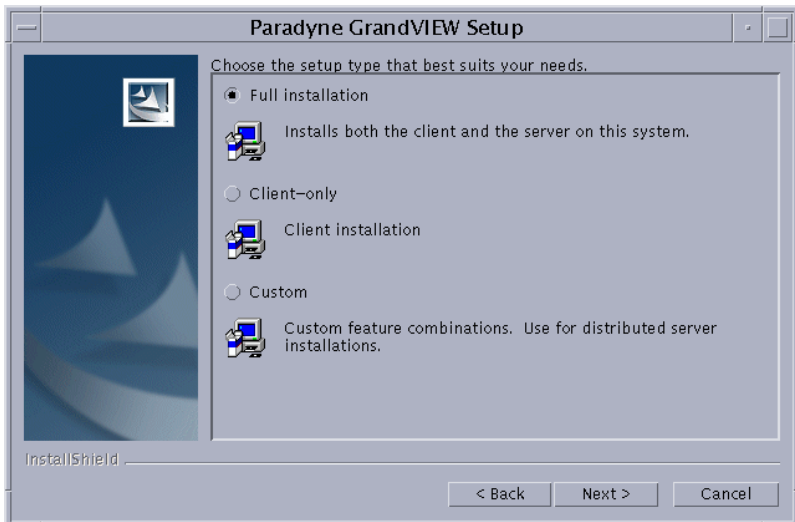
12. Read the license agreement, signify your acceptance of the terms by clicking the appropriate button, and click on Next. A summary of the components that will be installed appears.



13. Click on Next. The installation directory screen appears. Specify the directory where Dorado Redcell should be installed.



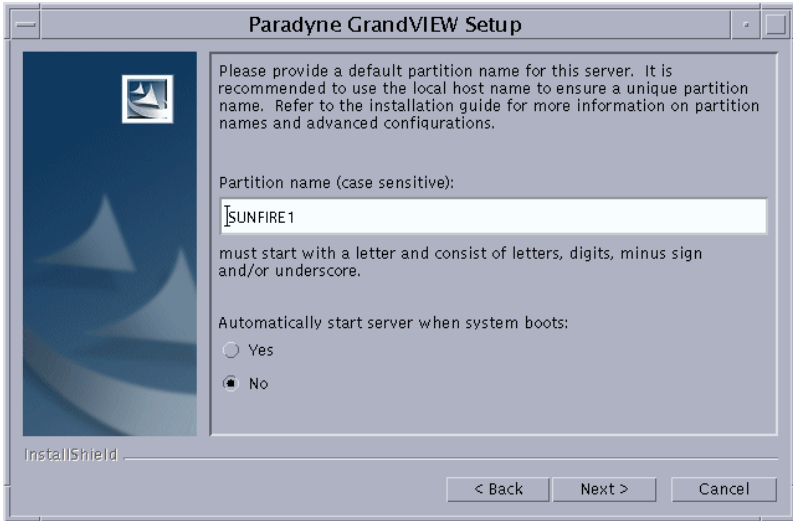
14. Click on Next. The setup type selection screen appears.



15. Select the setup type from the available options.
- **Full installation** — Installs application server, database server, mediation server, and client on this host.
 - **Client** — This installs client software. It does not configure the machine to run the Mediation Agent or Application Server.
 - **Custom** — Do not use.

Select **Full installation** for a new GrandVIEW EMS installation.

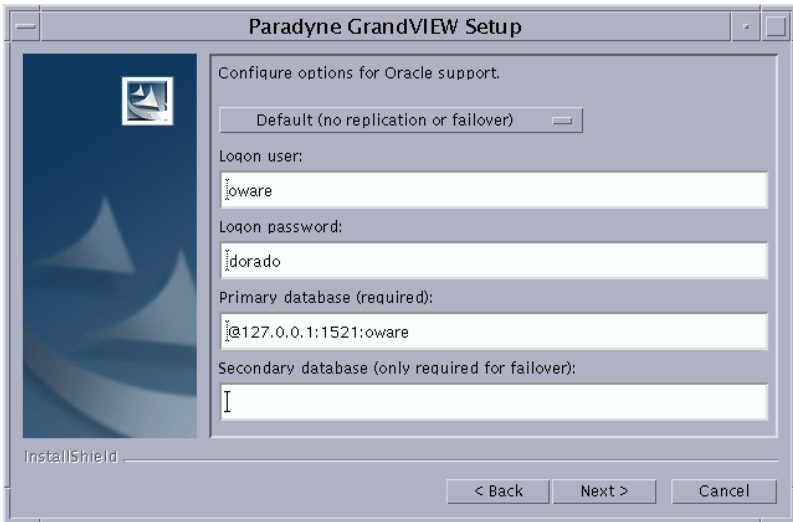
16. Click on Next. During a Client installation, you are prompted for the partition name of the default application server. This is normally the host name. Enter the name and click on Next.



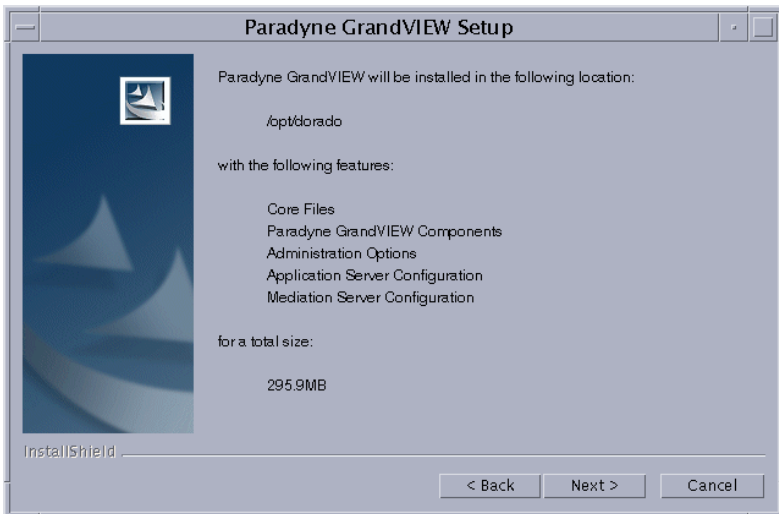
17. The database selection screen appears. Select 6.0.0 (the default) and click on Next.



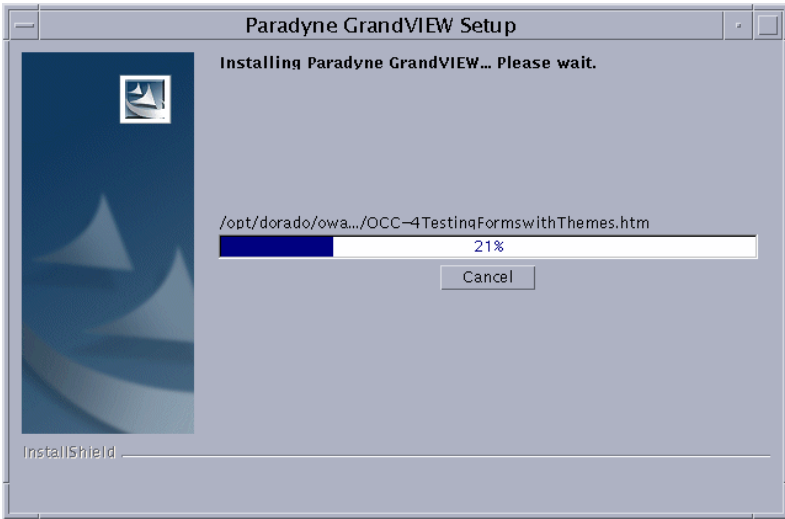
18. During a Full installation, you are prompted to enter options for Oracle database support. Do not change the default options.



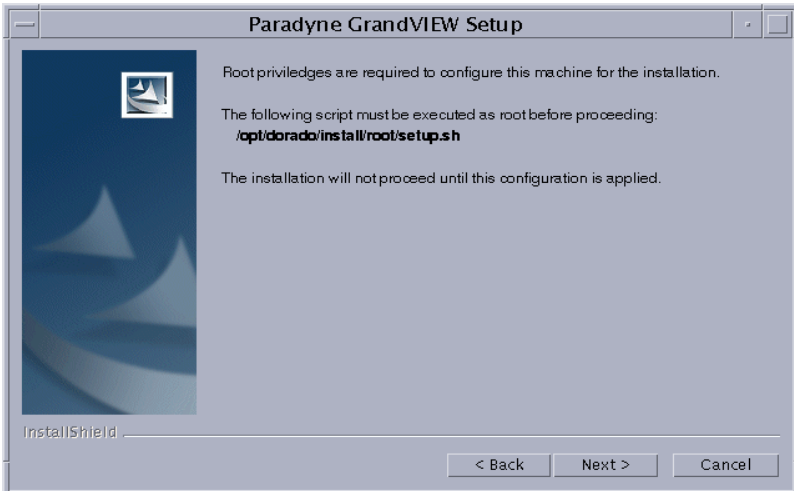
19. Once you have selected the appropriate installation type and have provided the necessary information, you can begin copying the needed files. The next screen confirms your selections.



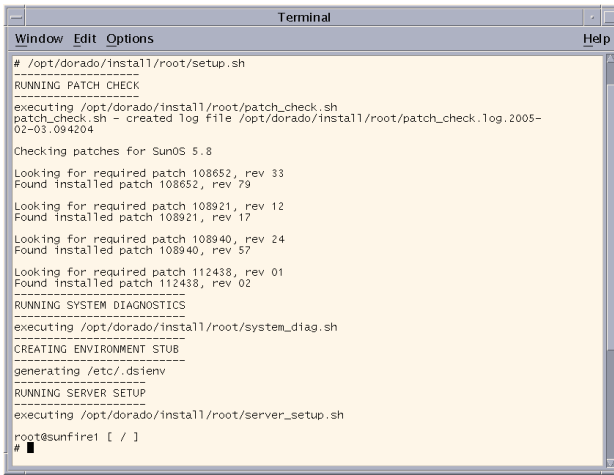
20. Click on Next to begin. The Installer shows you the current installation status.



21. The next prompt requests a script that verifies system compatibility and records information in case you need technical assistance. It also requests you install some files as root. Open a new shell, log in as root, and run the listed script (/opt/dorado/install/root/setup.sh).



The following shows the script output.

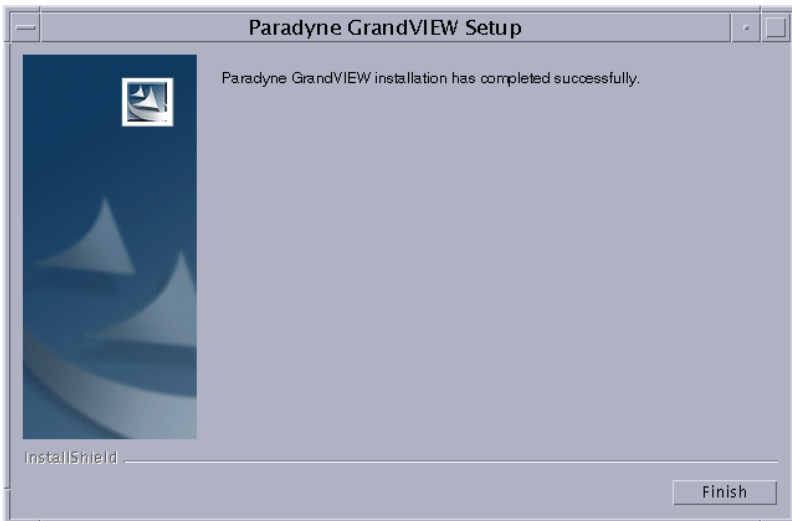


```
# /opt/dorado/install/root/setup.sh
-----
RUNNING PATCH CHECK
-----
executing /opt/dorado/install/root/patch_check.sh
patch_check.sh - created log file /opt/dorado/install/root/patch_check.log.2005-02-03.094204

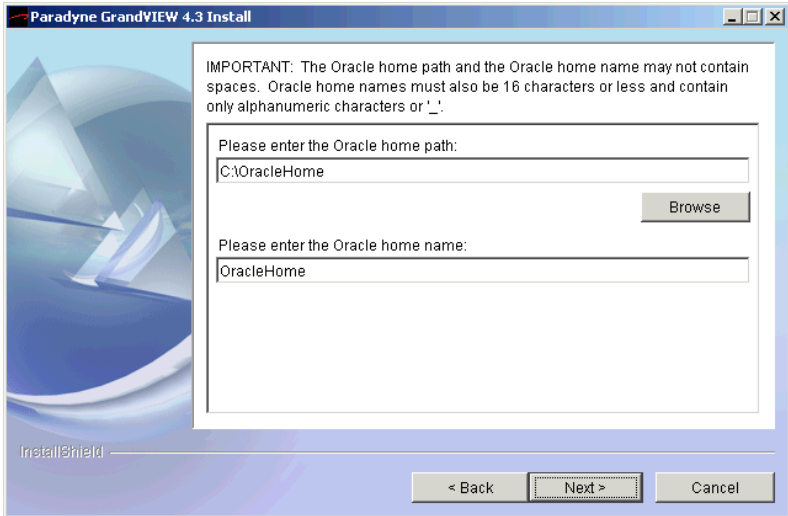
Checking patches for SunOS 5.8
Looking for required patch 108652, rev 33
Found installed patch 108652, rev 79
Looking for required patch 108921, rev 12
Found installed patch 108921, rev 17
Looking for required patch 108940, rev 24
Found installed patch 108940, rev 57
Looking for required patch 112438, rev 01
Found installed patch 112438, rev 02
-----
RUNNING SYSTEM DIAGNOSTICS
-----
executing /opt/dorado/install/root/system_diag.sh
-----
CREATING ENVIRONMENT STUB
-----
generating /etc/.dstenv
-----
RUNNING SERVER SETUP
-----
executing /opt/dorado/install/root/server_setup.sh

root@sunfire1 [ / ]
# █
```

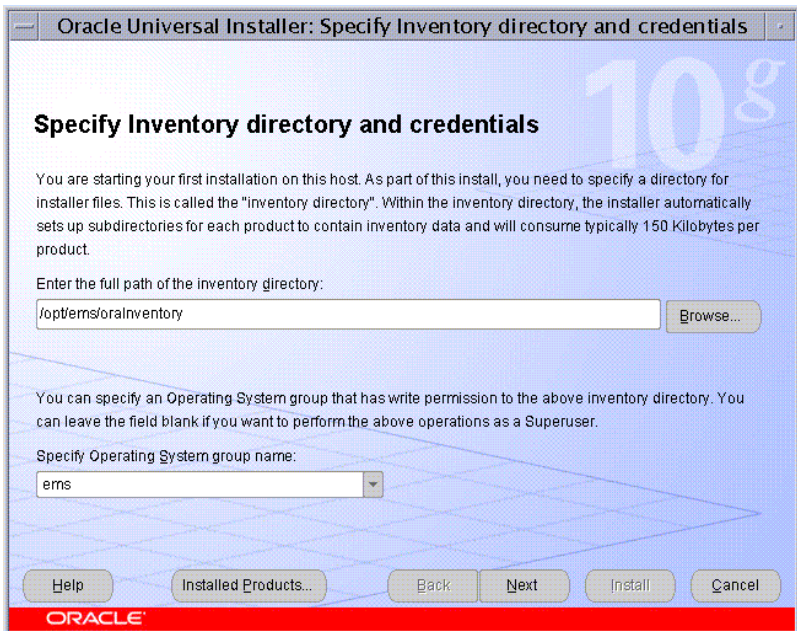
- 22. In the GrandVIEW EMS Setup screen, click on Next. If the installer reports a “Can not find file” error, ignore it and click on Next.
- 23. When the installation program finishes the database initialization process it notifies you that the installation is complete. Click on Finish to close the installer.



24. For a Full installation, a dialog screen appears that allows you to change the location of the Oracle home directory. Make any desired changes and click on Next.



25. The Oracle Inventory Directory and Credentials screen appears. Select **ems** for the Operating System Group Name.



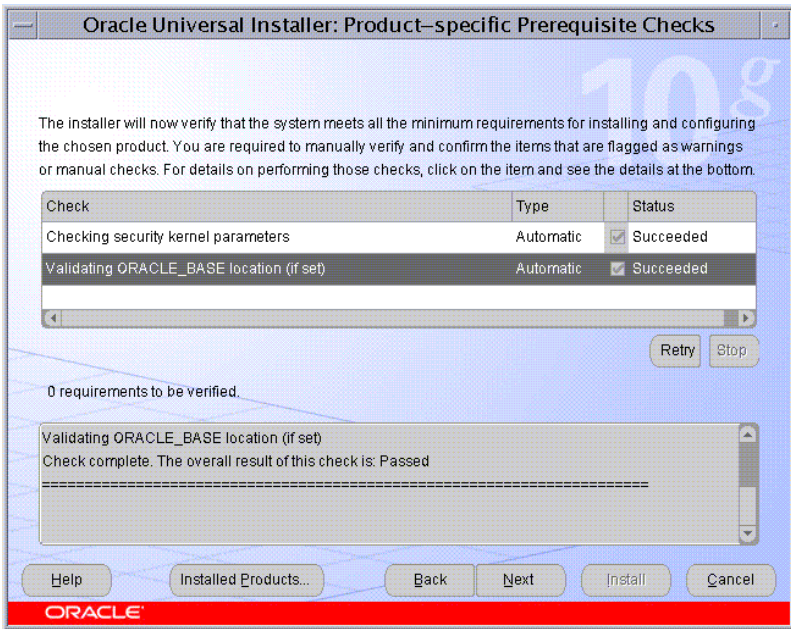
26. When prompted, open a console window and log in as **root**. Run the `oraInstRoot.sh` script. Then return to the prompt and click on Continue.



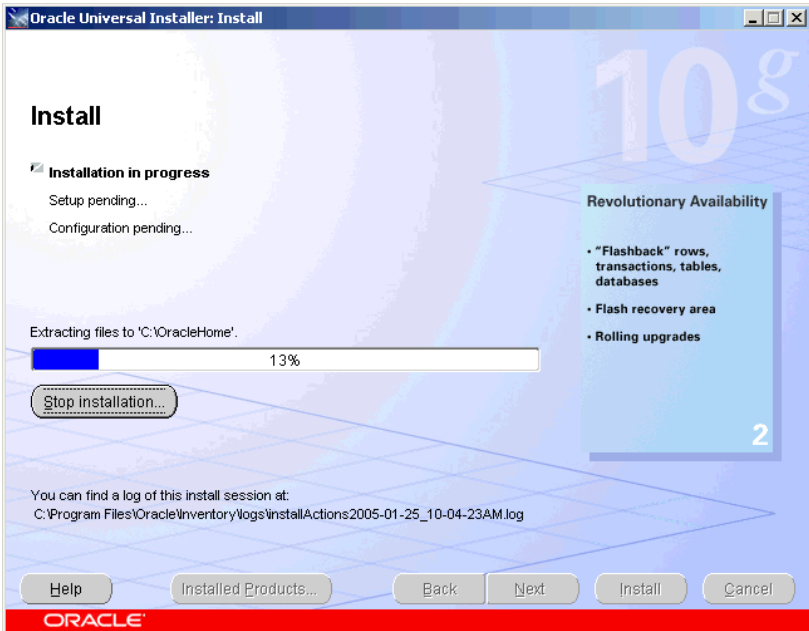
The following shows the script output.



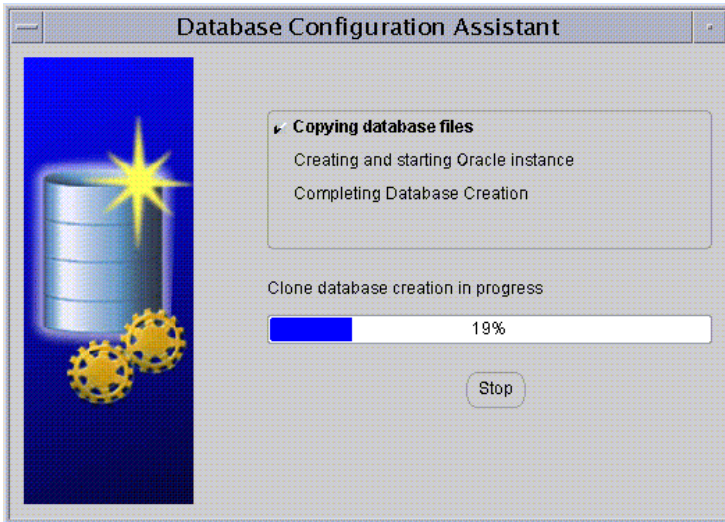
27. When you click on Continue, the Oracle Prerequisite Checks screen appears. Follow the instructions on the screen. If all checks are successful, click on Next.



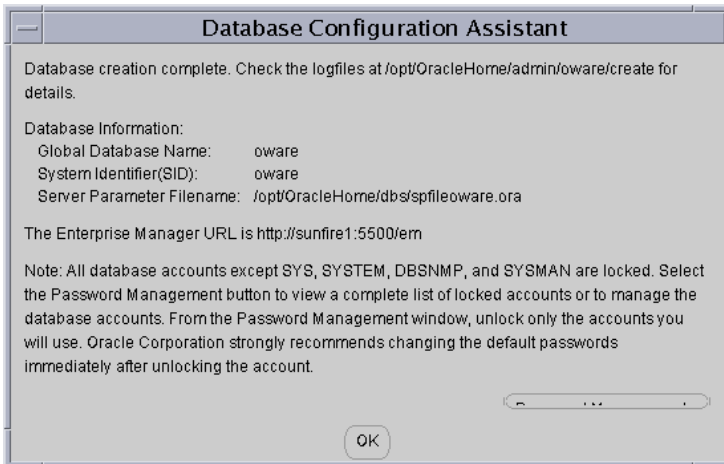
28. The Oracle installation screen appears. Await completion of the installation.



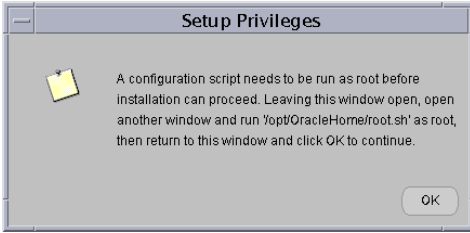
29. The Database Configuration Assistant screen appears. Await completion of the database creation



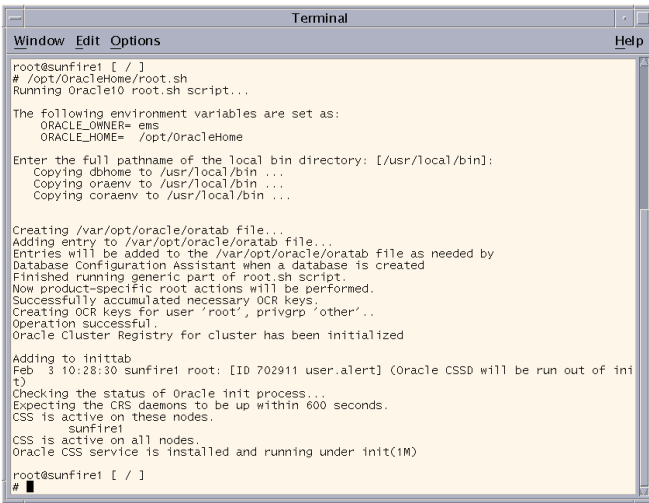
30. When the database creation completion message appears, click on OK. No passwords need to be changed.



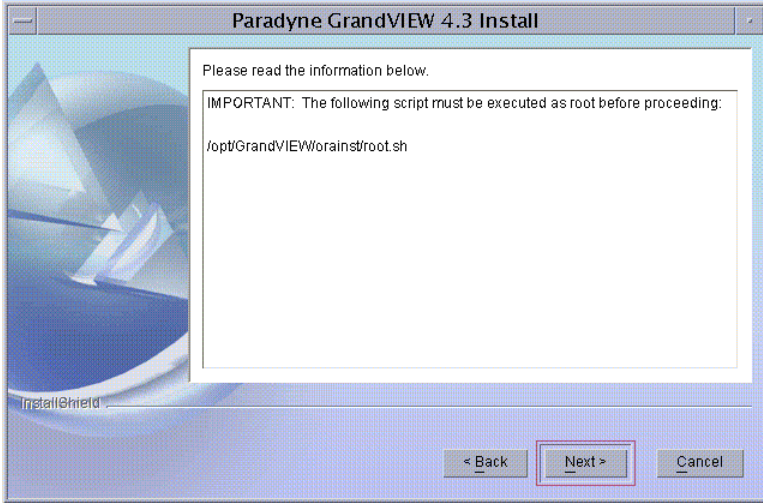
31. When prompted, open a console window and log in as **root**. Run the `/opt/OracleHome/root.sh` script. Then return to the prompt and click on OK.



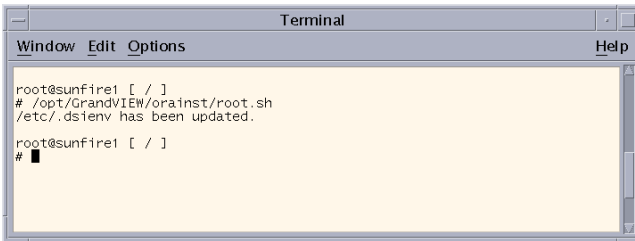
Use `/usr/local/bin` as the default bin directory.



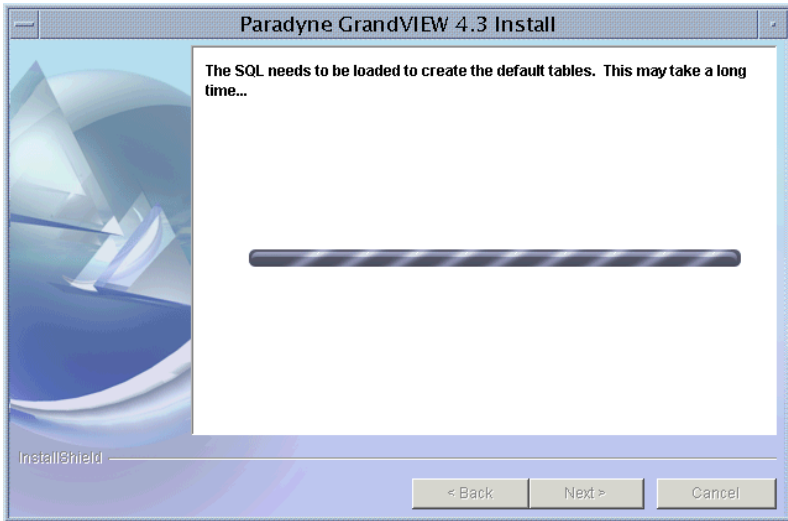
32. Next, run the `/opt/GrandVIEW/orainst/root.sh` script. Then return to the prompt and click on Next.



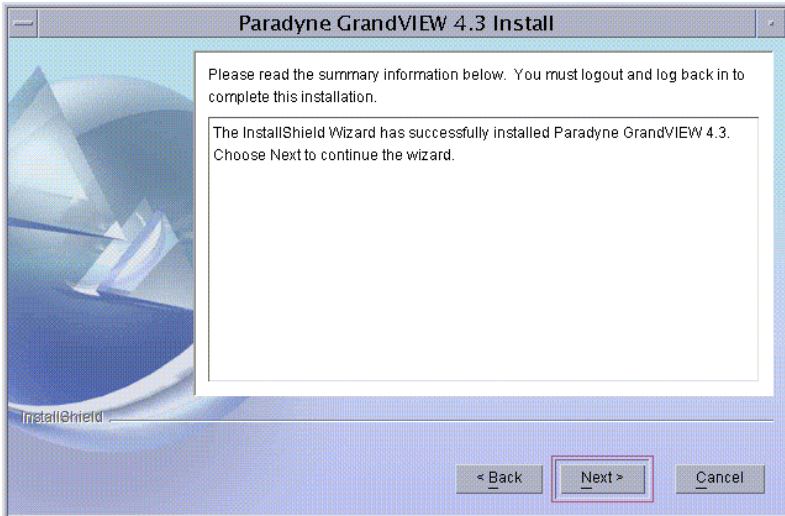
The following shows the script output.



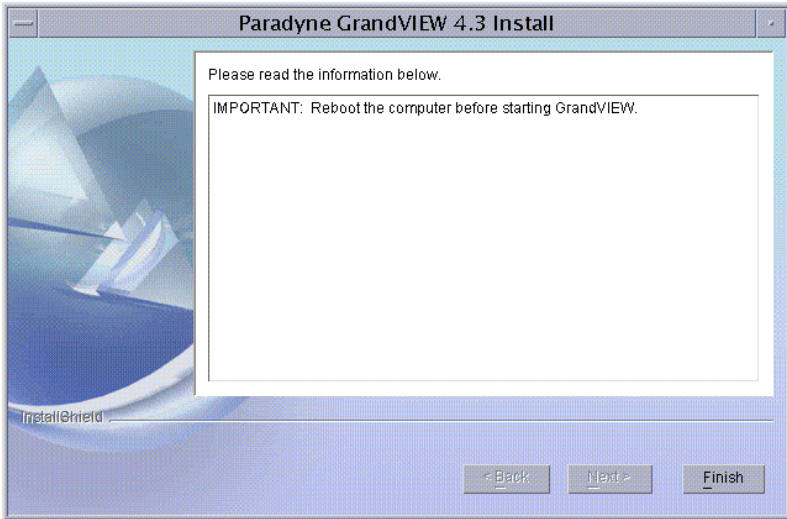
33. When you click on Next, default tables are created. This may take a couple of hours. When it is complete, click on Next.



34. When the installation is complete, a summary is displayed. Click on Next.



35. The final installation screen is displayed. Click on Finish.



36. Reboot the computer. GrandVIEW EMS is installed and ready to be run.

Starting GrandVIEW EMS

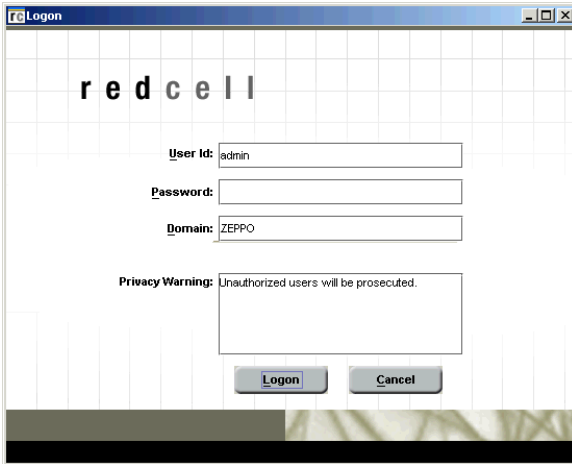
To start GrandVIEW EMS:

► Procedure

1. Log in as the ems user.
2. Start the application server using the command:
startappserver
3. Wait for the command line prompt, meaning the script is complete and the application server has started.

Logging On

1. Type **redcell** on the command line and press Return.
2. Type the user ID and password. When GrandVIEW EMS is installed, the default user ID is **admin** and the default password is null (press Enter).



For best security, change the password the first time you use GrandVIEW EMS. Select Change Password from the Settings menu. Keep a record of the new password.

Uninstalling GrandVIEW EMS

To remove GrandVIEW EMS from your computer:

► Procedure

1. Back up your *.properties files before uninstalling if you want to preserve them.
2. Stop the application server with the command:
stopappserver 127.0.0.1 trustnoone
3. Remove GrandVIEW EMS with the command:
GrandVIEW/_uninst/uninstaller.sh
4. Click Next to continue. Confirm that you want to remove GrandVIEW EMS and all the listed, installed components. You can optionally delete the owareapps directory and any sub-directories.

Operating System Modifications

The following outlines some of the technical details of installation. These are the changes to an installation.

Modified Files

The following system files may be modified during root installation:

/etc/system — checks, and if needed, upgrades key values

/etc/services — adds the database daemon entry

/etc/inetd.conf — adds the database daemon entry

/etc.oscnnnnnn — writes the database environment information to this file

/etc/rc2.d/S76owprocmon — installed

The rest of the installation installs program files, does the setup functions, and performs the initial database load.

Common Desktop

`$HOME/.dt/types/ow_*.*`

`$HOME/.dt/types/owapp_*.*`

`$HOME/.dt/icons/oware.*`

`$HOME/.dt/icons/redcell.*`

The following is an example .dtprofile modifications:

```
# Oware environment setup
if [ -r /etc/.dsienv ]; then . /etc/.dsienv; fi
```

Autostart Scripts

`/etc/rc2.d/S76owprocmon`

Cleanup for Manual Uninstall

If cleaning out an installation manually, do the following:

1. Remove common desktop files, types, and icons.
2. Clean up TCP services by removing any line containing `osc`.
3. Restart services:

```
kill -1 `ps -ef |grep inetd |grep -v grep |awk '{print $2}'`
```

4. Remove autostart scripts from `/etc/rc2.d`.
5. Delete installation directory (`rm -rf`).
6. Log out and back into common desktop.

Warranty, Sales, Service, and Training Information

Contact your local sales representative, service representative, or distributor directly for any help needed. For additional information concerning warranty, sales, service, repair, installation, documentation, training, distributor locations, or Paradyne worldwide office locations, use one of the following methods:

- **Internet:** Visit the Paradyne World Wide Web site at www.paradyne.com. (Be sure to register your warranty at www.paradyne.com/warranty.)
- **Telephone:** Call our automated system to receive current information by fax or to speak with a company representative.
 - Within the U.S.A., call 1-800-870-2221
 - Outside the U.S.A., call 1-727-530-2340

Document Feedback

We welcome your comments and suggestions about this document. Please mail them to Technical Publications, Paradyne Corporation, 8545 126th Ave. N., Largo, FL 33773, or send e-mail to userdoc@paradyne.com. Include the number and title of this document in your correspondence. Please include your name and phone number if you are willing to provide additional information.

Trademarks

GrandVIEW is a registered trademark of Paradyne Corporation. All other products and services mentioned herein are the trademarks, service marks, registered trademarks, or registered service marks of their respective owners.



7890-A2-GN14-00